

GILDED BALLOON TEVIOT THE TURRET TECHNICAL SPECIFICATIONS 2019



SEATING

- The Turret has 6 rows of seating on the floor with a total of **50 seats**.

STAGE

- The performance area is trapezoidal in shape; approximately 5m wide; the upstage edge is 3m wide. The stage is 2m deep and is covered by black dance floor
- The stage is raised 300mm above floor level
- There is limited backstage space at the rear and sides of the stage, however this is also used as storage space, so the usable space varies year to year

MASKING

- Black box with SL and SR splits for entrances.
- Limited SL and SR wing space, no crossover.

SUSPENSION

- Front of house bar is supported from the floor to the ceiling with compression poles
- Hanging position is approximately **3000mm** from the floor
- Side and rear bars are formed of a freestanding scaffolding structure **2840mm** from the floor
- There are no overhead bars above the stage and due to the nature of the scaffolding structure it is not possible to add any
- There are no flying facilities

GILDED BALLOON TEVIOT THE TURRET TECHNICAL SPECIFICATIONS 2019



LIGHTING

- The control position for both lighting and sound is located at the rear of the venue house left
- It is possible for one person to operate both sound and lighting

Equipment	
CONTROL	Zero88 Jester 12/24
DIMMING	6 x 10Amp (2 free channels in standard rig)
Max power supply loading	3kW

- A general cover of warm and cool light is provided to cover the performance area.
- A centre stage spot is provided, focused with a semi-hard edge to provide light for a single performer
- There are 2 Red/Green/Blue LED fixtures at the sides of the stage which can be used to mix most colours

The standard venue rig cannot be refocused in any way.

- Additional lanterns can be rigged as company specials, but due to rigging, power and weight limitations, and any rigged equipment must be approved for use before arrival.
- Cabling for any extra kit must be provided to reach the dimmers or stage boxes (please get in touch to discuss prior to arrival).
- All dimming channels run on 15A round pin connectors
- Blackout is acceptable, 'full' blackout is not possible due to emergency lighting regulations.

General Information

Additional lanterns can be rigged as company specials, but due to rigging and power considerations these must be approved for use before arrival. As well as fixtures, cabling for any extras must be provided to reach the dimmers or stage boxes (please get in touch to discuss prior to arrival).

All electrical equipment brought into the venue must be PAT tested.

If you would like any help sourcing additional fixtures, please contact the technical team at technical@gildedballoon.co.uk

The above information is subject to change - for the most current plans and specifications, to discuss company specials or for any other Lighting related queries please get in touch with the Technical Manager at: technical@gildedballoon.co.uk

SOUND

- The control position for both lighting and sound is located at the rear of the venue house left
- One operator can operate both sound and lighting

GILDED BALLOON TEVIOT THE TURRET TECHNICAL SPECIFICATIONS 2019



Equipment

CONTROL	Soundcraft M8 Mixing Console
AMPLIFICATION	1 x NEXO NX4X1 POWER AMPLIFIER 2 x NEXO ID24 SPEAKER
PLAYBACK	Via supplied PC DI box and Mini Jack cable
MICROPHONES & STANDS	2 x BSS AR116/133 Phantom DI Box 3 x Sure SM58 Dynamic Cardioid Microphone
CABLING	Various microphone and Jack cables

We provide an audio system of good, undistorted, even coverage across the entire seating area sufficiently powerful to satisfy most productions. If you feel that you have specific requirements regarding the sound system in a venue, please be in touch with our Technical Manager at: technical@gildedballoon.co.uk

Please Note: Prior to your arrival, a professional audio engineer tunes the audio rig in each venue. This system cannot be refocused or amended in any way.

Radio Microphones

- If you would like Gilded Balloon to source radio mics for your show, you can do so in the technical questionnaire on Eventotron, or by getting in touch with the Technical Manager at technical@gildedballoon.co.uk
- In the United Kingdom, there are two legal mix frequencies for Radio Microphones; 38 and 70
- If your radio microphone does not fall into one of these two channels, you will not be allowed to use it
- If your radio microphone is on channel 38, you will be required to provide a copy of your license prior to being able to plug in and use your microphone on our system

If you need to purchase a radio microphone licence for the duration of the festival please contact the Technical Manager at: technical@gildedballoon.co.uk who will be able to help you through the process. .

The above information is subject to change - for the most current plans and specifications, to discuss company needs, radio microphones or for any other Sound related queries please get in touch with the Technical Manager at: technical@gildedballoon.co.uk

PROJECTION

There is a projector available in the Turret, however **no screen** is provided, please contact the production team if you require one sourced on your behalf.

There is a **£5 + VAT recharge** per show for use of the projector to cover maintenance fees.

Please contact production for further information.

DRESSING ROOM & STORAGE

- There is no dressing room for this space
- There is limited storage area behind the stage in the left and right corners and a small store up a flight of stairs opposite the venue
- It is not possible to provide storage space in other parts of the building.
- All set items must easily pass through a standard door

GILDED BALLOON TEVIOT THE TURRET TECHNICAL SPECIFICATIONS 2019



ACCESS

THE TURRET is located at: Gilded Balloon
Teviot Row House
13 Bristo Square
Edinburgh
EH8 9AJ

Teviot Row House is vehicle accessible via Charles Street Lane via Crichton Street
Entry for loading is from the rear lane, through 4 sets of standard width doors, and up a set of stairs

There is no parking at Teviot Row House

♿ ACCESSIBILITY

Wheelchair Access, Lift Access, 2 Wheelchair Spaces, Accessible Facilities, Accessible Toilets

There is not currently level access via the main doors of Teviot due to nearby construction works, however there is an accessible lift via the Garden entrance. Lifts are available to most floors and there is a variety of seating throughout the venue.

Please be aware that the stage is currently not wheelchair accessible. There is a 300mm step up to the stage.

GB TECHNICAL OPERATOR FEES

- The venue has one Technician assigned to it. They will oversee all technical rehearsals and turnarounds
- If you require a GB technician to operate lighting and/or sound an operator fee will be charged at settlement (see below)
- Companies are welcome to bring their own qualified Technicians but **must** ensure the person designated for the role is **suitably technically competent** to operate the venue equipment
- GB technicians are happy to assist staff as much as required during the technical rehearsals, but should additional assistance be required once the run has begun, GB Operator fees will be charged

Fee Type	What's Included
Turnaround Technician Optional Fee (charged at settlement)	Set show lighting state/mic & mic stand etc. £15 per performance + VAT (For the avoidance of doubt show up/down includes: Set show lighting state/mic & mic stand and general SM duties etc, does NOT include operating cues within the show) Total to pay at settlement = £15 per performance
GB Operator (SND or LX) Optional Fee (charged at settlement)	Full Show Operation by GB Technical Operator of Sound AND Lighting Turnaround Technician fee plus £5 per crew member per performance + VAT Total to pay at settlement = £20 per performance

GILDED BALLOON TEVIOT THE TURRET TECHNICAL SPECIFICATIONS 2019



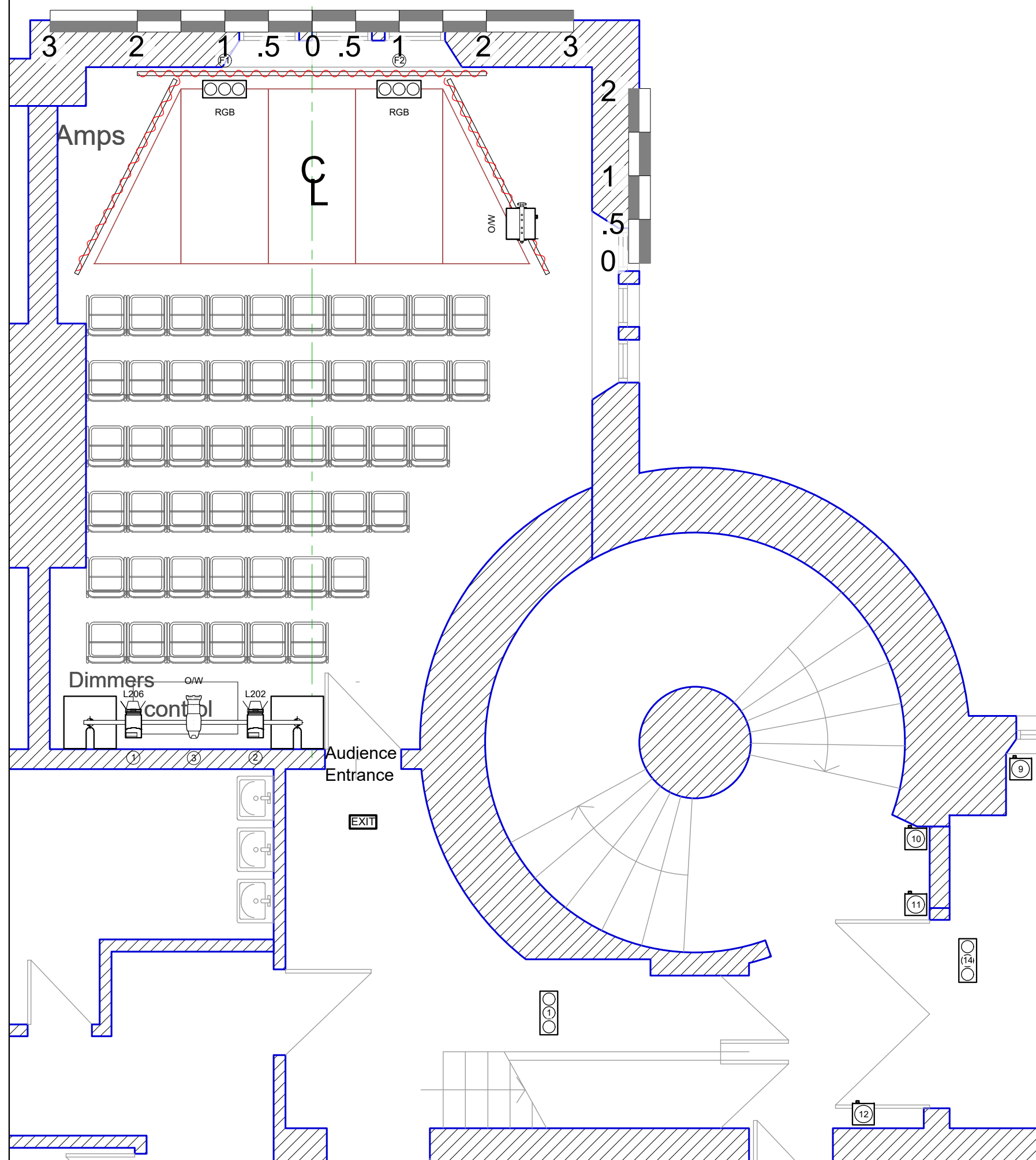
SECURITY

- Although Gilded Balloon endeavour to ensure the safety of your venue, please be advised we do not accept responsibility for any items left in the venue. We recommend taking extra precaution when storing your items each day.
- Take all computers, tablets, and desktop projectors with you every day

NOTES

- There are no wardrobe or laundry facilities at Teviot Row House
- Any additional staff or items of equipment, which the management are requested to provide will be charged to the visiting company
- Any electrical equipment you wish to use must have a current PAT certificate dated less than 12 months prior. All electrical items must also be cleared with us before use. We reserve the right to refuse the use of any equipment, which is deemed unsafe
- Each company is assigned a get in/rehearsal time prior to their first performance. This is the time for you to load your set and props into the venue and to re-tech your show. This time is also for the venue technician to learn the requirements of your production
- You will need to allow enough time to rehearse your daily turnaround and set storage. Please note that your time slot must include get-in and get-out time
- All use of naked flames, smoke, haze, strobe, laser or pyrotechnic effects must be cleared with management before bringing onsite. Smoking is not permitted in any venues, on or offstage however e-cigarettes or other non-burning stage types are allowed
- At the end of the festival, please arrange for removal or disposal of your set and any unused publicity material. Any company who does not comply will be charged for the cost of disposal. The base charge for disposal is £200.00 but may be increased.
- Please note, since this is a temporary conversion and not a permanent performance space, all measurements and quantities quoted in the above specification are approximate and may be subject to change.

For the most current plans and specifications or to discuss any other queries please get in touch with the production team: production@gildedballoon.co.uk, technical@gildedballoon.co.uk



50 Seats in Venue

Legend			
	ETC S4-Jr Zoom 25-50		BB4 LED Washlight
	Minuette Fresnel		Barn Door
	Strand Coda 500/1		D&B Audio E3



TURRET	
VENUE PLAN	
1:50 AT A3	SC
26/04/2019	TEVIOT ROW HOUSE