

GILDED BALLOON TEVIOT

THE WINE BAR

TECHNICAL SPECIFICATIONS 2019



SEATING

- The Wine Bar has several banks of seating - the main seating bank consists of 5 rows
- There is a v-shaped space behind the first row to accommodate a column which affects sightlines.
- There are four other seating banks; one on either side of the stage and one in each of the back corners of the venue
- There are a total of 120 seats on ground level and 30 on the balcony level. The total number of seats in the venue is 150

STAGE

- The performance area is approximately 5m wide by 3.7m deep and is covered by black dance floor.
- The stage is raised 100mm above floor level.
- There is limited backstage space at the rear and sides of the stage, however this is also used as storage space so the actual usable space varies year to year

MASKING

- Black box space with USL and USR splits for entrances.
- Limited wing space SL and SR
- A crossover is possible but this will depend on storage requirements

GILDED BALLOON TEVIOT THE WINE BAR TECHNICAL SPECIFICATIONS 2019



SUSPENSION

- The truss rig in this venue is free standing from the balcony
- The truss stands at 4740mm from the floor
- There are no over stage bars in this venue. It is possible to add truss to span the middle of the stage, but this would require an additional rental and must be arranged with the Production Team prior to arrival
- There are no flying facilities
- Lightweight items of scenery may be hung at the discretion of the Production Team

LIGHTING

- The control position for lighting and sound is at the rear of the room behind the staircase
- It is possible for one person to operate sound and lighting

Equipment	
CONTROL	ETC Ion
DIMMING	24 x 13Amp (9 unused in standard rig)
Max power supply loading	9.2kW

- A general cover of warm and cool light is provided over the performance area. This is split into 4 areas, DSL, DSR, USL & USR
- Centre stage spot is focussed with a semi-hard edge to provide light for a single performer
- There is cover in warm from SL and SR
- Soft focused breakup gobo cover from two profiles at the rear corners of the stage
- The rig also features 6 moving lights
- 2 Martin Mac 700 profiles rigged front of house and 4 Martin Aura wash lights which are rigged at the rear of the stage

The standard venue rig cannot be refocused in any way.

- Additional lanterns can be rigged as company specials, but due to rigging, power and weight limitations, any rigged equipment must be approved for use before arrival.
- Cabling for any extra kit must be provided to reach the dimmers or stage boxes (please get in touch to discuss prior to arrival).
- All dimming channels run on 15A round pin connectors
- Blackout is acceptable, 'full' blackout is not possible due to emergency lighting regulations.

General Information

Additional lanterns can be rigged as company specials, but due to rigging and power considerations these must be approved for use before arrival. As well as fixtures, cabling for any extras must be provided to reach the dimmers or stage boxes (please get in touch to discuss prior to arrival).

GILDED BALLOON TEVIOT THE WINE BAR TECHNICAL SPECIFICATIONS 2019



All electrical equipment brought into the venue must be PAT tested.

If you would like any help sourcing additional fixtures, please contact the technical team at technical@gildedballoon.co.uk

The above information is subject to change - for the most current plans and specifications, to discuss company specials or for any other Lighting related queries please get in touch with the Technical Manager at: technical@gildedballoon.co.uk

SOUND

- The control position for lighting and sound is at the rear of the room behind the staircase
- It is possible for one person to operate both sound and lighting

Equipment	
CONTROL	Yamaha LS9-16 Mixing Console
AMPLIFICATION	5 x d&b Audiotechnik D6 Stereo Amplifier 2 x d&b Audiotechnik Q10 Loudspeaker 1 x d&b Audiotechnik QSub 4 x d&b Audiotechnik E0 Bass Speaker 3 x d&b audiotechnik E12 Loudspeaker
PLAYBACK	Via supplied PC DI box and Mini Jack cable
MICROPHONES & STANDS	4 x BSS AR116/133 Phantom DI Box 3 x Sure SM58 2 x Sure SM57 5 x Tall Black Mic Stand with Boom 2 x Short Black Mic Stand with Boom 1 x Black Round Based Mic Stand 1 x One Handed Mic Stand
CABLING	Various microphone and Jack cables

We provide an audio system of good, undistorted, even coverage across the entire seating area sufficiently powerful to satisfy most productions. If you feel that you have specific requirements regarding the sound system in a venue, please be in touch with our Technical Manager at: technical@gildedballoon.co.uk

Please Note: Prior to your arrival, a professional audio engineer tunes the audio rig in each venue. This system cannot be refocused or amended in any way.

Radio Microphones

- If you would like Gilded Balloon to source radio mics for your show, you can do so in the technical questionnaire on Eventotron, or by getting in touch with the Technical Manager at technical@gildedballoon.co.uk
- In the United Kingdom, there are two legal mix frequencies for Radio Microphones; 38 and 70
- If your radio microphone does not fall into one of these two channels, you will not be allowed to use it

GILDED BALLOON TEVIOT THE WINE BAR TECHNICAL SPECIFICATIONS 2019



- If your radio microphone is on channel 38, you will be required to provide a copy of your license prior to being able to plug in and use your microphone on our system

If you need to purchase a radio microphone licence for the duration of the festival please contact the Technical Manager at: technical@gildedballoon.co.uk who will be able to help you through the process.

The above information is subject to change - for the most current plans and specifications, to discuss company needs, radio microphones or for any other Sound related queries please get in touch with the Technical Manager at: technical@gildedballoon.co.uk

PROJECTION

There is a projector available for use in the Wine Bar, mounted to the ceiling, however there is no screen is included in the standard venue kit. If you require a projection screen sourced for you please contact the production team.

Please note that there is a **£5 recharge** per show for use of the projector to cover any maintenance fees. If you have any questions please contact production at production@gildedballoon.co.uk

This projector cannot be re-focused in any way.

DRESSING ROOM & STORAGE

- There is no dressing room for this space
- There is room back stage for dressing needs
- The dressing/scenic store is located up a flight of stairs from the venue
- It is not possible to provide storage space in other parts of the building.
- All set items must easily pass through a standard door.

ACCESS

THE WINE BAR is located at:

Gilded Balloon
Teviot Row House
13 Bristo Square
Edinburgh
EH8 9AJ

Teviot Row House is vehicle accessible via Charles Street Lane via Crichton Street
Entry for loading is from the rear lane, through 4 sets of standard width doors, and up a set of stairs

There is no parking at Teviot Row House

♿ ACCESSIBILITY

Wheelchair Access, Lift Access, 4 Wheelchair Spaces, Accessible Facilities, Accessible Toilets

There is not currently level access via the main doors of Teviot due to nearby construction works, however there is an accessible lift via the Garden entrance. Lifts are available to most floors and there is a variety of seating throughout the venue.

GILDED BALLOON TEVIOT THE WINE BAR TECHNICAL SPECIFICATIONS 2019



Please note the stage is not wheelchair accessible, there are 3 steps up to the stage.

GB TECHNICAL OPERATOR FEES

- The venue has one Technician assigned to it. They will oversee all technical rehearsals and turnarounds
- In this venue there is a mandatory charge of £15 per performance - this is a turnaround technician charge to ensure turnarounds run smoothly and shows run on time in the venue. It is up to the company to provide additional staff as required to help with the turnaround between shows
- If you require a GB technician to operate lighting and/or sound an operator fee will be charged at settlement (see below)
- Companies are welcome to bring their own qualified Technicians but **must** ensure the person designated for the role is **suitably technically competent** to operate the venue equipment
- GB technicians are happy to assist staff as much as required during the technical rehearsals, but should additional assistance be required once the run has begun, GB Operator fees will be charged

Fee Type	What's Included
Turnaround Technician Mandatory Fee (charged at settlement)	Turnaround Technician fee including show Up/Down (Snd + LX) £15 per performance + VAT (For the avoidance of doubt show up/down includes: Set show lighting state/mic & mic stand and general SM duties etc.) Total to pay at settlement = £15 per performance
GB Operator (SND or LX) Optional Fee (charged at settlement)	Full Show Operation by GB Technical Operator of Sound AND Lighting Turnaround Technician fee plus £5 per crew member per performance + VAT Total to pay at settlement = £20 per performance

SECURITY

- Although Gilded Balloon endeavour to ensure the safety of your venue, please be advised we do not accept responsibility for any items left in the venue. We recommend taking extra precaution when storing your items each day.
- Take all computers, tablets, and desktop projectors with you every day

NOTES

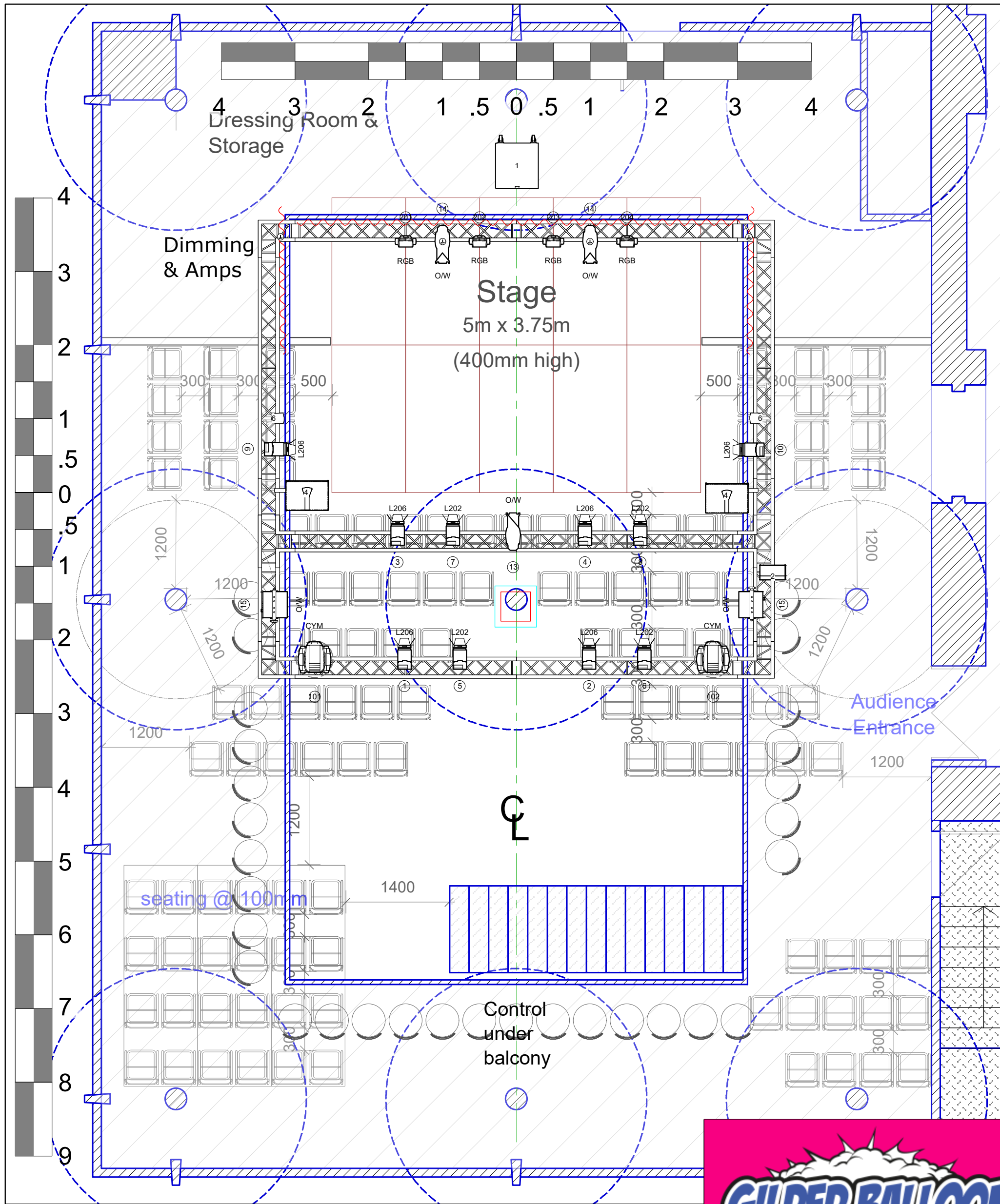
- There are no wardrobe or laundry facilities at Teviot Row House

GILDED BALLOON TEVIOT THE WINE BAR TECHNICAL SPECIFICATIONS 2019



- Any additional staff or items of equipment, which the management are requested to provide will be charged to the visiting company
- Any electrical equipment you wish to use must have a current PAT certificate dated less than 12 months prior. All electrical items must also be cleared with us before use. We reserve the right to refuse the use of any equipment, which is deemed unsafe
- Each company is assigned a get in/rehearsal time prior to their first performance. This is the time for you to load your set and props into the venue and to re-tech your show. This time is also for the venue technician to learn the requirements of your production
- You will need to allow enough time to rehearse your daily turnaround and set storage. Please note that your time slot must include get-in and get-out time
- All use of naked flames, smoke, haze, strobe, laser or pyrotechnic effects must be cleared with management before bringing onsite. Smoking is not permitted in any venues, on or offstage however e-cigarettes or other non-burning stage types are allowed
- At the end of the festival, please arrange for removal or disposal of your set and any unused publicity material. Any company who does not comply will be charged for the cost of disposal. The base charge for disposal is £200.00 but may be increased.
- Please note, since this is a temporary conversion and not a permanent performance space, all measurements and quantities quoted in the above specification are approximate and may be subject to change.

For the most current plans and specifications or to discuss any other queries please get in touch with the production team: production@gildedballoon.co.uk, technical@gildedballoon.co.uk



Legend			
	Minuette Fresnel		MAC 700 Profile
	Strand Coda 500/1		Mac Aura
	ETC S4 26°		Barn Door
	ETC S4 50°		Template
	E3		C7 Sub
	E0		Q7

150 Seats in Venue



THE WINE BAR	
VENUE PLAN	
1:50 AT A3	SC
27/04/2019	TEVIOT ROW HOUSE