

GILDED BALLOON PATTERN HOUSE

THE OTHER YIN

TECHNICAL SPECIFICATIONS 2019



SEATING

- The Other Yin has 10 rows of seats
- The front row is on the floor and is removable by arrangement
- The remaining rows are part of a seating bank and are fixed in the space
- The total capacity is 156 seats

STAGE

- The performance area is approximately 6000mm wide x 3000mm deep and is a trapezoidal shape
- Performance can extend in front of this area if required
- The stage is at floor level, and the surface is TBD
- Stage access is via a split in the curtains at the rear of the performance area, or via the stage sides through a curtained BOH access.
- There is a crossover behind the stage.

MASKING

- There are soft black drapes on the rear and sides of the performance area

SUSPENSION

- There are no flying facilities in The Other Yin
- Please be aware the roof is approximately 3200mm above the stage

LIGHTING

- The control position for both lighting and sound is located at the back of the room on the house left side, in line with the back two row of chairs.
- It is possible to operate both sound and lights from the same position.

Equipment

CONTROL	ETC Ion
DIMMING	12 channels of dimming and distribution are provided in the space
DMX	RS6 DMX Distribution/Splitter

- A good general cover is provided over the performance area.

This general cover cannot be refocused or recoloured in any way

Lighting Fixtures:

- 9 x 1200-watt Fresnel's (providing front wash and split between the FOH LX truss and 2 Truss uprights for acts playing downstage)
- 1 x 36-degree Source 4 profile (centre special)
- 2 x 36-degree Source 4 profile (rear gobo wash)
- 6 x Phillips SL LED par (rear and side wash)

Effects

- There is no hazer or smoke machine in The Other Yin.

GILDED BALLOON PATTERN HOUSE

THE OTHER YIN

TECHNICAL SPECIFICATIONS 2019



General Information

Additional lanterns can be rigged as company specials, but due to rigging and power considerations these must be approved for use before arrival. As well as fixtures, cabling for any extras must be provided to reach the dimmers or stage boxes (please get in touch to discuss prior to arrival).

All electrical equipment brought into the venue must be PAT tested.

If you would like any help sourcing additional fixtures, please contact the technical team at technical@gildedballoon.co.uk

The above information is subject to change - for the most current plans and specifications, to discuss company specials or for any other Lighting related queries please get in touch with the Technical Manager at: technical@gildedballoon.co.uk

SOUND

- The control position for both lighting and sound is located at the back of the room on the house left side, in line with the back two row of chairs
- It is possible to operate both sound and lights from the same position

Equipment	
CONTROL	YAMAHA LS9-16 MIXING CONSOLE
	YAMAHA MY8-AD24 8 x I/P CARD
AMPLIFICATION	2X d&b audiotechnik Q10 LOUDSPEAKER
	2X d&b audiotechnik QSUB
	2X d&b audiotechnik E0 LOUDSPEAKER (infill)
	4x d&b audiotechnik D6 STEREO AMPLIFIER
PLAYBACK	Via provided stereo mini jack cable and PC Di box
FOLDBACK	3X d&b audiotechnik E12 LOUDSPEAKER
MICROPHONES, DI's, AND STANDS	5X SHURE SM58
	4X DI BOXES
	5x TALL MICROPHONE STANDS
CABLING	Various 3 Pin XLR Cables 1 - 10m
	Various 3.5mm Stereo Jack to 2x XLR
	Various adaptors and sundries

We provide an audio system of good, undistorted, even coverage across the entire seating area sufficiently powerful to satisfy most productions. If you feel that you have specific requirements regarding the sound system in a venue, please be in touch with our Technical Manager at: technical@gildedballoon.co.uk

Please Note:

Prior to your arrival, a professional audio engineer tunes each venues audio rig. This System cannot be re-tuned or amended in any way.

GILDED BALLOON PATTERN HOOSE

THE OTHER YIN

TECHNICAL SPECIFICATIONS 2019



Radio Microphones

- If you would like Gilded Balloon to source radio mics for your show, you can do so in the technical questionnaire on Eventotron, or by getting in touch with the Technical Manager at technical@gildedballoon.co.uk
- In the United Kingdom, there are two legal mix frequencies for Radio Microphones; 38 and 70
- If your radio microphone does not fall into one of these two channels, you will not be allowed to use it
- If your radio microphone is on channel 38, you will be required to provide a copy of your license prior to being able to plug in and use your microphone on our system

If you need to purchase a radio microphone licence for the duration of the festival please contact the Technical Manager at: technical@gildedballoon.co.uk who will be able to help you through the process.

Piano

There is no Piano available in the space.

The above information is subject to change - for the most current plans and specifications, to discuss company needs, radio microphones or for any other Sound related queries please get in touch with the Technical Manager at: technical@gildedballoon.co.uk

COMMS

The availability of comms sets is TBD.

PROJECTION

There is no projector available in The Other Yin. Due to the low height of the ceiling we do not recommend projection. Please contact the Production Team for further assistance.

BARS

There is a bar located at the ground floor of Patter Hoose. Please contact the bars team at bars@gildedballoon.co.uk for further information.

DRESSING ROOM

There is a makeshift dressing room to the back far right of the venue, accessible by the drape line which separates the rear of the venue from the performance area. This is a very small dressing room that is to be shared with many companies, please do not use this space to store flyers or merchandise.

STORAGE

There is a small storage space for props behind the drape line stage left. This is at the same level as the stage. This space is shared with other companies is roughly 3 square meters in size.

All set items must easily pass through a standard door.

ACCESS

The Other Yin is located at:

- Level 2
- Adam House
- 5 and 6 Chambers Street

GILDED BALLOON PATTERN HOUSE

THE OTHER YIN

TECHNICAL SPECIFICATIONS 2019



Edinburgh
EH1 1HR

Entry for loading is from the front of the building through the front doors and a small lift (dimensions TBC). There is a standard width door to load into the venue itself.

Please contact production to arrange delivery of large set items.

Please be aware there are no parking facilities at the Patter Hoose. Standard central city parking fees apply to parking around the venue.

♿ ACCESSIBILITY

Please be aware the various levels of Patter Hoose are wheelchair accessible via a lift.

GILDED BALLOON PATTERN HOOSE

THE OTHER YIN

TECHNICAL SPECIFICATIONS 2019



GB TECHNICAL OPERATOR FEES

- The venue has one Technician assigned to it. They will oversee all technical rehearsals and turnarounds.
- In this venue there is a mandatory charge of £15 per performance - this is a turnaround technician charge to ensure turnarounds run smoothly and shows run on time in the venue. It is up to the company to provide additional staff as required to help with the turnaround between shows.
- If you require a GB technician to operate lighting and/or sound an operator fee will be charged at settlement (see below).
- Companies are welcome to bring their own qualified Technicians but **must** ensure the person designated for the role is **suitably technically competent** to operate the venue equipment.
- GB technicians are happy to assist staff as much as required during the technical rehearsals, but should additional assistance be required once the run has begun, GB Operator fees will be charged.

Fee Type	What's Included
Turnaround Technician Mandatory Fee (charged at settlement)	Turnaround Technician fee including show Up/Down (Snd + LX) £15 per performance + VAT (For the avoidance of doubt show up/down includes: Set show lighting state/mic & mic stand and general SM duties etc.) Total to pay at settlement = £15 per performance
GB Operator (SND or LX) Optional Fee (charged at settlement)	Full Show Operation by GB Technical Operator of Sound AND Lighting Turnaround Technician fee plus £5 per crew member per performance + VAT Total to pay at settlement = £20 per performance

SECURITY

- Although Gilded Balloon endeavour to ensure the safety of your venue, please be advised we do not accept responsibility for any items left in the venue. We recommend taking extra precaution when storing your items each day.
- Take all computers, tablets, and desk top projectors with you every day

NOTES

- There are no wardrobe or laundry facilities at Patter Hoose
- Any additional staff or items of equipment, which the management are requested to provide will be charged to the visiting company
- Any electrical equipment you wish to use must have a current PAT certificate dated less than 12 months prior. All electrical items must also be cleared with us before use. We reserve the right to refuse the use of any equipment, which is deemed unsafe

GILDED BALLOON PATTERN HOOSE

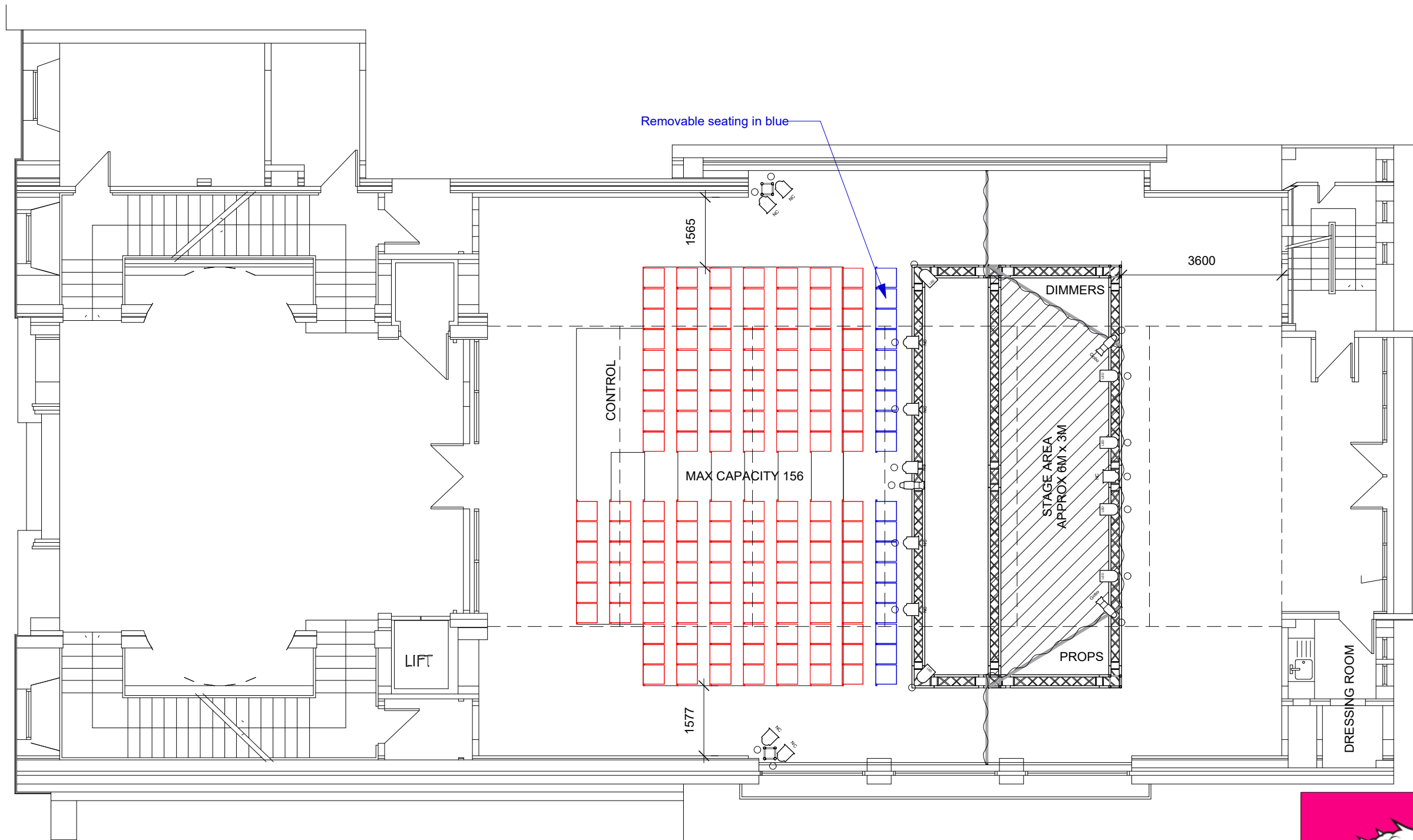
THE OTHER YIN

TECHNICAL SPECIFICATIONS 2019



- Each company is assigned a get in/rehearsal time prior to their first performance. This is the time for you to load your set and props into the venue and to re-tech your show. This time is also for the venue technician to learn the requirements of your production
- You will need to allow enough time to rehearse your daily turnaround and set storage. Please note that your time slot must include get-in and get-out time
- All use of naked flames, smoke, haze, strobe, laser or pyrotechnic effects must be cleared with management before bringing onsite. Smoking is not permitted in any venues.
- At the end of the festival, please arrange for removal or disposal of your set and any unused publicity material. Any company who does not comply will be charged for the cost of disposal. The base charge for disposal is £200.00 but may be increased.
- Please note, since this is a temporary conversion and not a permanent performance space, all measurements and quantities quoted in the above specification are approximate and may be subject to change.

For the most current plans and specifications or to discuss any other queries please get in touch with the production team: production@gildedballoon.co.uk, technical@gildedballoon.co.uk



THE OTHER YIN	
LAYOUT	
1:100 AT A3	SC
30/03/2019	PATTER HOOSE