

GILDED BALLOON ROSE THEATRE

MAIN THEATRE

TECHNICAL SPECIFICATIONS 2019



SEATING

- The total capacity of the Main Theatre is 280

STAGE

- Performing area - front section 6500mmx3000mm
- Rear Section – 6000mm x 3000mm
- Rear section may be curtained off and used for storage or back projection
- There is one set of removable steps into the audience

MASKING

- Hard and soft black masking, truss borders as required
- Black back cloth
- 16x 2x1 risers
- Various legs available

SUSPENSION

- There are no flying facilities in the Main Theatre.

GILDED BALLOON ROSE THEATRE MAIN THEATRE TECHNICAL SPECIFICATIONS 2019



LIGHTING

- The control position for both lighting and sound is located at the back of the room on the house right side.
- It is possible to operate both sound and lights from the same position.

Equipment

CONTROL
DIMMING

MA Lighting 2 Ultra-Lite
ZERO88 Chilli Pro 24 Switching (Dimmer / Hot Power)
AVOLITES Powercube Dimming & Hot Power Rack

There are 6 circuits on Advance Truss.

There are 6 circuits Upstage Centre

There are 6 circuits Downstage Left.

There are 6 circuits Downstage Right

All circuits terminating in the Chilli Dimmer Rack.

DMX

N8 Artnet Node

2 x RS6 DMX Distribution Splitter

There are 6 circuits on each truss. Terminating in socapex ends, into the Powercube.

This general cover cannot be refocused or recoloured in any way

Lighting Fixtures:

- 6 x Source 4 Zoom 15 - 30
- 9 x MARTIN Mac Axiom Hybrid
- 4 x MARTIN Mac Quantum Wash
- 8 x RUSH MH6 Wash
- 6 x RUSH Par 2 RGBW Zoom
- 8 x eLumen8 Tour Batten Quad
- 1x LED Star Cloth

Effects

- 1 x JEM Hazer Pro

General Information

Additional lanterns can be rigged as company specials, but due to rigging and power considerations these must be approved for use before arrival. As well as fixtures, cabling for any extras must be provided to reach the dimmers or stage boxes (please get in touch to discuss prior to arrival).

All electrical equipment brought into the venue must be PAT tested.

GILDED BALLOON ROSE THEATRE

MAIN THEATRE

TECHNICAL SPECIFICATIONS 2019



If you would like any help sourcing additional fixtures, please contact the technical team at technical@gildedballoon.co.uk

The above information is subject to change - for the most current plans and specifications, to discuss company specials or for any other Lighting related queries please get in touch with the Technical Manager at: technical@gildedballoon.co.uk

SOUND

- The control position for both lighting and sound is located at the back of the room on the house right side.
- It is possible to operate both sound and lights from the same position.

Equipment

CONTROL

Digico SD9 FOH Console
Digico MAD1 Rack 48/16 I/O
Allen & Heath AB168 16/8 I/O

AMPLIFICATION

3x D&B Y8 per side
1x D&B Y12 per side
6x D&B B6 Sub in CDA configuration
1x D&B Y10P per side (out fill)
4x D&B E6 (front fill)
2x D&B E6 (delay)
2x D&B 30D DSP Amplifiers
1x D&B 10D DSP Amplifier

MONITORS

8x D&B M6 Monitors
2x D&B 10D DSP Amplifiers

PLAYBACK

QLAB Rack Mac Mini System with CD Player

MICROPHONES & STANDS

2x Handheld Radio Mics
8x Shure BETA 58A
9x Shure BETA 57A
1x Shure BETA 91A
4x Sennheiser 904
5x Audix ADX51
4x T.Bone Ovid System C100 (Violin and Cello Clips)
1x Shure Beta 98 U/C

CABLING

8x BSS AR-133 Active DI Boxes
20x Beyerdynamic GST400 Boom Stands
5x Beyerdynamic GST590 Short Boom Stands
Various 3 Pin XLR Cables 1 - 10m
Mono Jack Cables 5m
2x 24 input VDC sub multicores
Various 3.5mm Stereo Jack to 2x XLR
Various adaptors and sundries

GILDED BALLOON ROSE THEATRE MAIN THEATRE TECHNICAL SPECIFICATIONS 2019



We provide an audio system of good, undistorted, even coverage across the entire seating area sufficiently powerful to satisfy most productions. If you feel that you have specific requirements regarding the sound system in a venue, please be in touch with our Technical Manager at: technical@gildedballoon.co.uk

Please Note: Prior to your arrival, a professional audio engineer tunes the audio rig in each venue. This system cannot be refocused or amended in any way.

Radio Microphones

- If you would like Gilded Balloon to source radio mics for your show, you can do so in the technical questionnaire on Eventotron, or by getting in touch with the Technical Manager at technical@gildedballoon.co.uk
- In the United Kingdom, there are two legal mix frequencies for Radio Microphones; 38 and 70
- If your radio microphone does not fall into one of these two channels, you will not be allowed to use it
- If your radio microphone is on channel 38, you will be required to provide a copy of your license prior to being able to plug in and use your microphone on our system

If you need to purchase a radio microphone licence for the duration of the festival please contact the Technical Manager at: technical@gildedballoon.co.uk who will be able to help you through the process.

COMMS

- 4x ASL Comm System
- Stage, LX, Sound, Prompt Corner
- Building Internal Phone System FOH + Stage
-

PROJECTION

Projection is possible in the Main Space. Please contact production for further information.

BARS

There is a Theatre Bar located directly underneath the Main Space. The opening hours for this are show dependent. Please contact bars@gildedballoon.co.uk for further information.

DRESSING ROOM

There are several dressing room facilities for the Main space. Please contact production for further information on this.

STORAGE

There is storage space on either side of the stage behind the wings, and next to the upstage right alcove. It is at the discretion of the venue stage manager where to store props and set.

All set items must easily pass through a standard door.

GILDED BALLOON ROSE THEATRE

MAIN THEATRE

TECHNICAL SPECIFICATIONS 2019



ACCESS

The MAIN THEATRE is located at: Rose Theatre
204 Rose Street
Edinburgh
EH2 4AZ

Entry for loading is from the front of the building through the front doors or through a set of service doors located on Rose Street South Lane. There is a standard width door to load into the venue itself.

Please contact production to arrange delivery of large set items.

Please be aware there is no parking facilities at the Rose Theatre. Standard central city parking fees apply to parking around the venue.

& ACCESSIBILITY

Please be aware currently no Rose Theatre venues are wheelchair accessible due to the nature of this historical building. We are working towards installing a lift to make all levels wheelchair accessible in the future.

GB TECHNICAL OPERATOR FEES

- The venue has a Stage Manager, Lighting Operator and Sound Operator who will oversee all technical rehearsals and turnarounds.
- In this venue there is a mandatory charge of £15 per performance - this is a turnaround technician charge to ensure turnarounds run smoothly and shows run on time in the venue. It is up to the company to provide additional staff as required to help with the turnaround between shows.
- If your show requires our technicians to operate **lighting** and/or **sound** and/or to carry out onstage cues or to stay for the duration of the performance for any other reason an operator fee will be charged at settlement (see below).
- A reduced rate is charged when the show simply requires lights up/down and is included as part of the turnaround technician fee (one cue to put light on stage and set microphone live then one cue to return to audience exit state).
- If you require more technicians than details below, each additional Technician will be charged at a rate of £5 per performance plus VAT
- Companies are welcome to bring their own qualified Technicians but **must** ensure the person designated for the role is **suitably technically competent** to operate the venue equipment.
- GB Technicians are happy to assist staff as much as required during the technical rehearsals, but should additional assistance be required once the run has begun, GB Operator fees will be charged.

GILDED BALLOON ROSE THEATRE

MAIN THEATRE

TECHNICAL SPECIFICATIONS 2019



The rates below are applicable the Main Theatre **only**.

Fee Type	What's Included
Turnaround Technician Mandatory Fee (charged at settlement)	Turnaround Technician fee including show Up/Down (Snd OR LX) £15 per performance + VAT (For the avoidance of doubt show up/down includes: Set show lighting state/mic & mic stand etc.) Total to pay at settlement = £15 per performance
GB Operator (SND or LX) Optional Fee (charged at settlement)	Full Show Operation by GB Technical Operator of Sound OR Lighting Turnaround Technician fee plus £5 per crew member per performance + VAT Total to pay at settlement = £20 per performance
GB Operator (SND + LX) Optional Fee (charged at settlement)	Full Show Operation by GB Technical Operator of Sound AND Lighting Turnaround Technician fee plus £5 per crew member per performance + VAT Total to pay at settlement = £25 per performance
GB Operator (SND + LX + SM) Optional Fee (charged at settlement)	Full Show Operation by GB Technical Operator of Sound AND Lighting AND Stage Manager Turnaround Technician fee plus £5 per crew member per performance + VAT Total to pay at settlement = £30 per performance

SECURITY

- Although Gilded Balloon endeavour to ensure the safety of your venue, please be advised we do not accept responsibility for any items left in the venue. We recommend taking extra precaution when storing your items each day.
- Take all computers, tablets, and desktop projectors with you every day

NOTES

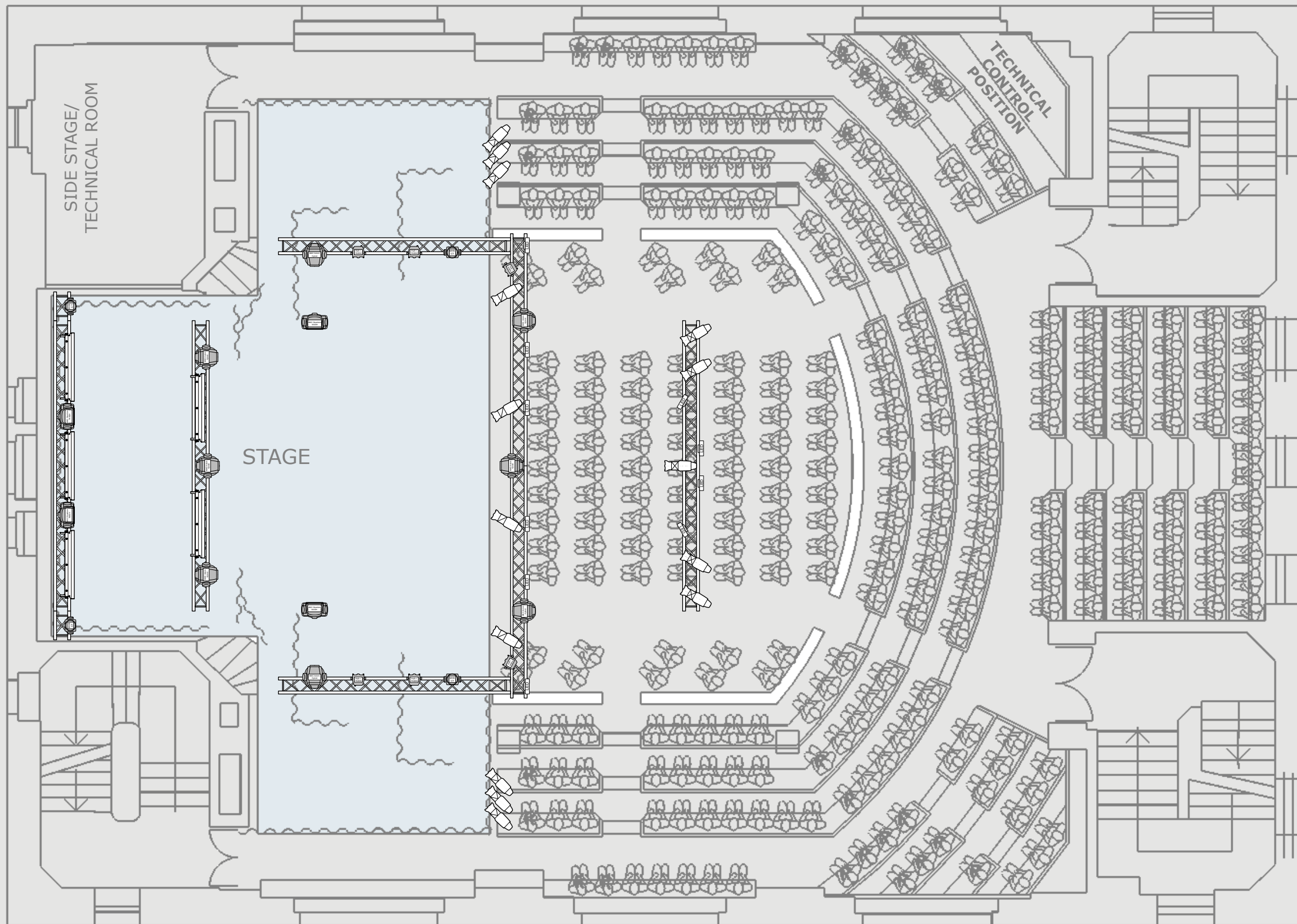
- There are no wardrobe or laundry facilities at Rose theatres
- Any additional staff or items of equipment, which the management are requested to provide will be charged to the visiting company
- Any electrical equipment you wish to use must have a current PAT certificate dated less than 12 months prior. All electrical items must also be cleared with us before use. We reserve the right to refuse the use of any equipment, which is deemed unsafe
- Each company is assigned a get in/rehearsal time prior to their first performance. This is the time for you to load your set and props into the venue and to re-tech your show. This time is also for the venue technician to learn the requirements of your production

GILDED BALLOON ROSE THEATRE MAIN THEATRE TECHNICAL SPECIFICATIONS 2019



- You will need to allow enough time to rehearse your daily turnaround and set storage. Please note that your time slot must include get-in and get-out time
- All use of naked flames, smoke, haze, strobe, laser or pyrotechnic effects must be cleared with management before bringing onsite. Smoking is not permitted in any venues, on or offstage however e-cigarettes or other non-burning stage types are allowed
- At the end of the festival, please arrange for removal or disposal of your set and any unused publicity material. Any company who does not comply will be charged for the cost of disposal. The base charge for disposal is £200.00 but may be increased.
- Please note, since this is a temporary conversion and not a permanent performance space, all measurements and quantities quoted in the above specification are approximate and may be subject to change.

For the most current plans and specifications or to discuss any other queries please get in touch with the production team: production@gildedballoon.co.uk, technical@gildedballoon.co.uk



MAIN THEATRE	
VENUE PLAN	
1:75 AT A3	SC
30/04/2019	ROSE THEATRE