

GILDED BALLOON PATTERN HOUSE THE NIP TECHNICAL SPECIFICATIONS 2019



SEATING

- The Nip has 7 rows of chairs
- The total capacity is 52 seats

STAGE

- The performance area is approximately 4000mm wide x 2000mm deep.
- The stage is raised 300mm above floor level
- Stage Access is via the venue entry next to stage
- There is no crossover behind the stage.

MASKING

- There are soft black drapes on the rear and sides of the stage

SUSPENSION

- There are no flying facilities in the Nip
- Please be aware the roof is approximately 2700mm above the stage

LIGHTING

- The control position for both lighting and sound is located at the back of the room on the house left side, in line with the back row of chairs
- It is possible to operate both sound and lights from the same position

Equipment

CONTROL	LSC Mantra Lite
DIMMING	All fixtures in this venue are Intelligent and do not use dimmers

- A good general cover is provided over the performance area

This general cover cannot be refocused or recoloured in any way

Lighting Fixtures:

- 2 x ETC Coloursource with Fresnel Lenses (front wash)
- 1 x ETC Coloursource with 36-degree Lens (front special)
- 2 x IPIX BB4 (rear wash)

Effects

- There is no hazer or smoke machine in the Nip

General Information

Additional lanterns can be rigged as company specials, but due to rigging and power considerations these must be approved for use before arrival. As well as fixtures, cabling for any extras must be provided to reach the dimmers or stage boxes (please get in touch to discuss prior to arrival).

All electrical equipment brought into the venue must be PAT tested.

If you would like any help sourcing additional fixtures, please contact the technical team at technical@gildedballoon.co.uk.

GILDED BALLOON PATTERN HOUSE

THE NIP

TECHNICAL SPECIFICATIONS 2019



The above information is subject to change - for the most current plans and specifications, to discuss company specials or for any other Lighting related queries please get in touch with the Technical Manager at: technical@gildedballoon.co.uk

SOUND

- The control position for both lighting and sound is located at the back of the room on the house left side, in line with the back row of chairs
- It is possible to operate both sound and lights from the same position

Equipment

CONTROL	Soundcraft E8 Mixing Desk
AMPLIFICATION	2 x NEXO ID24 Speaker 2 x NEXO NX4X1 amplifier
PLAYBACK	Via Supplied mini jack input cable and PC di box
MICROPHONES & STANDS	3 x Shure SM 58 microphones 3 x Tall microphone stands 2 x Bss AR133 di boxes
CABLING	Various 3 pin XLR cables 1-10 meter

We provide an audio system of good, undistorted, even coverage across the entire seating area sufficiently powerful to satisfy most productions. If you feel that you have specific requirements regarding the sound system in a venue, please be in touch with our Technical Manager at: technical@gildedballoon.co.uk

Please Note:

Prior to your arrival, a professional audio engineer tunes each venues audio rig. This System cannot be re-tuned or amended in any way.

Radio Microphones

- If you would like Gilded Balloon to source radio mics for your show, you can do so in the technical questionnaire on Eventotron, or by getting in touch with the Technical Manager at technical@gildedballoon.co.uk
- In the United Kingdom, there are two legal mix frequencies for Radio Microphones; 38 and 70
- If your radio microphone does not fall into one of these two channels, you will not be allowed to use it
- If your radio microphone is on channel 38, you will be required to provide a copy of your license prior to being able to plug in and use your microphone on our system

If you need to purchase a radio microphone licence for the duration of the festival please contact the Technical Manager at: technical@gildedballoon.co.uk who will be able to help you through the process.

Piano

There is a no piano available in the space.

The above information is subject to change - for the most current plans and specifications, to discuss company needs, radio microphones or for any other Sound related queries please get in touch with the Technical Manager at: technical@gildedballoon.co.uk

COMMS

The availability of comms sets is TBD.

GILDED BALLOON PATTERN HOOSE THE NIP TECHNICAL SPECIFICATIONS 2019



PROJECTION

There is no projector available in the Nip. Due to the low height of the ceiling we do not recommend projection. Please contact the Production Team for further assistance.

BARS

There is a bar located at the ground floor of Patter Hoose. Please contact the bars team at bars@gildedballoon.co.uk for further information.

DRESSING ROOM

There is a makeshift dressing room at the rear of the venue behind the stage, accessible by the corridor alongside the venue. This is a very small dressing room that is to be shared with many companies, please do not use this space to store flyers or merchandise.

STORAGE

There is storage space behind the control position masked by drapes. This is at the same level as the stage.

All set items must easily pass through a standard door.

ACCESS

The NIP is located at:

- Level 1
- Adam House
- 5 and 6 Chambers Street
- Edinburgh
- EH1 1HR

Entry for loading is from the front of the building through the front doors and a small lift (dimensions TBC). There is a standard width door to load into the venue itself.

Please contact production to arrange delivery of large set items.

Please be aware there is no parking facilities at the Patter Hoose. Standard central city parking fees apply to parking around the venue.

ACCESSIBILITY

Please be aware the various levels of Patter Hoose are wheelchair accessible via a lift.

GILDED BALLOON PATTERN HOOSE

THE NIP

TECHNICAL SPECIFICATIONS 2019



GB TECHNICAL OPERATOR FEES

- The venue has one Technician assigned to it. They will oversee all technical rehearsals and turnarounds.
- If you require a GB technician to operate lighting and/or sound an operator fee will be charged at settlement (see below).
- Companies are welcome to bring their own qualified Technicians but **must** ensure the person designated for the role is **suitably technically competent** to operate the venue equipment.
- GB technicians are happy to assist staff as much as required during the technical rehearsals, but should additional assistance be required once the run has begun, GB Operator fees will be charged.

Fee Type	What's Included
Turnaround Technician Optional Fee (charged at settlement)	Set show lighting state/mic & mic stand etc. £15 per performance + VAT (For the avoidance of doubt show up/down includes: Set show lighting state/mic & mic stand and general SM duties etc, does NOT include operating cues within the show) Total to pay at settlement = £15 per performance
GB Operator (SND or LX) Optional Fee (charged at settlement)	Full Show Operation by GB Technical Operator of Sound AND Lighting Turnaround Technician fee plus £5 per crew member per performance + VAT Total to pay at settlement = £20 per performance

SECURITY

- Although Gilded Balloon endeavour to ensure the safety of your venue, please be advised we do not accept responsibility for any items left in the venue. We recommend taking extra precaution when storing your items each day.
- Take all computers, tablets, and desk top projectors with you every day

NOTES

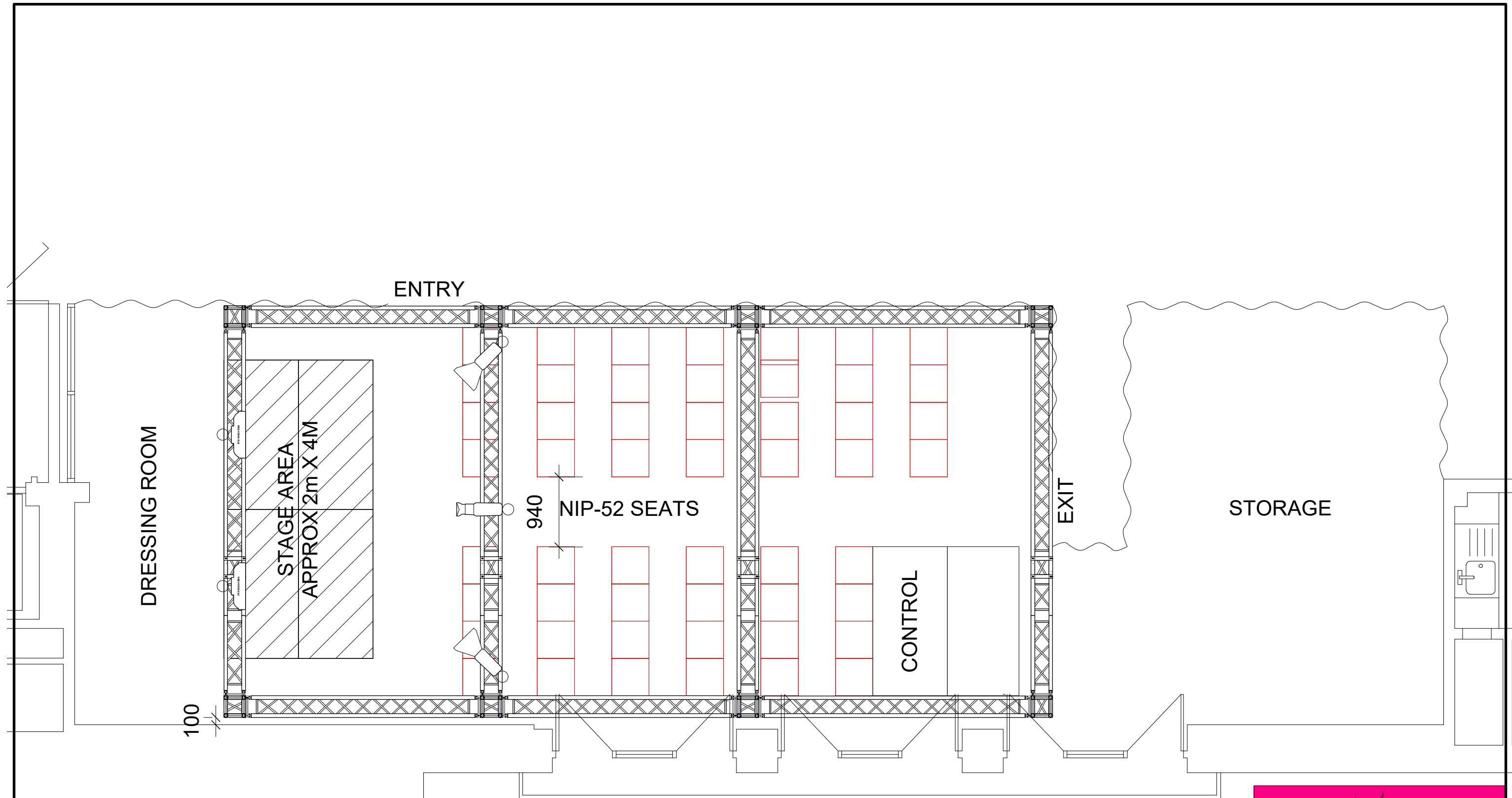
- There are no wardrobe or laundry facilities at Patter Hoose
- Any additional staff or items of equipment, which the management are requested to provide will be charged to the visiting company
- Any electrical equipment you wish to use must have a current PAT certificate dated less than 12 months prior. All electrical items must also be cleared with us before use. We reserve the right to refuse the use of any equipment, which is deemed unsafe
- Each company is assigned a get in/rehearsal time prior to their first performance. This is the time for you to load your set and props into the venue and to re-tech your show. This time is also for the venue technician to learn the requirements of your production
- You will need to allow sufficient time to rehearse your daily turnaround and set storage. Please note that your time slot must include get-in and get-out time
- All use of naked flames, smoke, haze, strobe, laser or pyrotechnic effects must be cleared with management before bringing onsite. Smoking is not permitted in any venues, on or offstage however e-cigarettes or other non-burning stage types are allowed

GILDED BALLOON PATTERN HOOSE THE NIP TECHNICAL SPECIFICATIONS 2019



- At the end of the festival, please arrange for removal or disposal of your set and any unused publicity material. Any company who does not comply will be charged for the cost of disposal. The base charge for disposal is £200.00 but may be increased
- Please note, since this is a temporary conversion and not a permanent performance space, all measurements and quantities quoted in the above specification are approximate and may be subject to change

For the most current plans and specifications or to discuss any other queries please get in touch with the production team: production@gildedballoon.co.uk, technical@gildedballoon.co.uk



NIP	
LAYOUT	
1:50 AT A3	SC
21/03/2019	PATTER HOOSE