

# GILDED BALLOON TEVIOT NIGHTCLUB TECHNICAL SPECIFICATIONS 2019



## **SEATING**

- The Nightclub has 10 rows of seating on the floor followed by 3 rows on a small platform at the back of the room
- There are benches built into the venue along the walls, which provide additional seating
- There is seating for 33 on the balcony level
- The total capacity is 140 seated –OR– 300 standing.

## **STAGE**

- The performance area is approximately 4m wide by 3m deep and is covered by black dance floor.
- The stage is raised 500mm above floor level
- There is limited backstage space in the stage right wing
- This space is also used for storage
- There is no crossover
- There is a column at the DSL and the DSR corner of the stage

## **MASKING**

- This is a proscenium stage with SR split and SL steps to the ground level for entrances.
- Limited SR wing space
- No crossover possible

# GILDED BALLOON TEVIOT NIGHTCLUB TECHNICAL SPECIFICATIONS 2019



## **SUSPENSION**

- The Front of house bars are attached to the ceiling 4500mm and 4900mm respectively from the floor
- The side and rear bar is hung 4500mm from the floor
- There are no overhead bars above the stage
- There are no flying facilities.
- All hanging scenery must be approved and is at the discretion of the Production Team

## **LIGHTING**

- The control position for both lighting and sound is located upstairs at the rear of the room at the top of the staircase - It is possible for one person to operate both

## ***Equipment***

CONTROL	ETC Ion
DIMMING	12 x 10Amp (4 Channels unused in standard rig)
Max power supply loading	7kW

- A good general cover of warm and cool light is provided over the performance area. This is split into 2 areas, SL & SR. Due to the stage layout (and pillar) these are crossed to cover alternate sides
- A centre stage spot is provided which is focussed with a semi-hard edge to provide light for a single performer
- A soft focussed breakup gobo cover is also provided from two profiles at the rear corners of the stage
- The rig also features 6 moving lights
- There are 2 Martin Mac Viper Profiles which are rigged front of house and 4 Martin Aura Wash which are rigged at the rear of the stage

## **The standard venue rig cannot be refocused in any way.**

- Additional lanterns can be rigged as company specials, but due to rigging, power and weight limitations, any rigged equipment must be approved for use before arrival.
- Cabling for any extra kit must be provided to reach the dimmers or stage boxes (please get in touch to discuss prior to arrival).
- All dimming channels run on 15A round pin connectors
- Blackout is acceptable, 'full' blackout is not possible due to emergency lighting regulations.

## **General Information**

Additional lanterns can be rigged as company specials, but due to rigging and power considerations these must be approved for use before arrival. As well as fixtures, cabling for any extras must be provided to reach the dimmers or stage boxes (please get in touch to discuss prior to arrival).

All electrical equipment brought into the venue must be PAT tested.

# GILDED BALLOON TEVIOT NIGHTCLUB TECHNICAL SPECIFICATIONS 2019



If you would like any help sourcing additional fixtures, please contact the technical team at [technical@gildedballoon.co.uk](mailto:technical@gildedballoon.co.uk)

The above information is subject to change - for the most current plans and specifications, to discuss company specials or for any other Lighting related queries please get in touch with the Technical Manager at: [technical@gildedballoon.co.uk](mailto:technical@gildedballoon.co.uk)

## SOUND

- The control position for lighting and sound is located at the rear of the venue house left
- There is only room for one operator to operate both sound and lighting

<b>Equipment</b>	
CONTROL	Yamaha M7CL 48 Channel Mixing Console
AMPLIFICATION	3 x d&b Audiotechnik E12 Loudspeaker
	2 x d&b Audiotechnik Q7 Loudspeaker
	2 x d&b Audiotechnik B1 Sub
	2 x d&b Audiotechnik A1 Mono Amplifier
	3 x Nexo iD24 Loudspeaker
	1 x Nexo NX4X1 Amplifier
	1 x Powersoft X8 Amplifier
PLAYBACK	Via supplied PC DI box and Mini Jack cable
MICROPHONES & STANDS	4 x BSS AR133 DI Box
	4 x Sure SM58 Microphones
	4 x Tall Black Mic Stand
	1 x One Handed Mic Stand
CABLING	Various microphone and Jack cables

We provide an audio system of good, undistorted, even coverage across the entire seating area sufficiently powerful to satisfy most productions. If you feel that you have specific requirements regarding the sound system in a venue, please be in touch with our Technical Manager at: [technical@gildedballoon.co.uk](mailto:technical@gildedballoon.co.uk)

**Please Note:** Prior to your arrival, a professional audio engineer tunes the audio rig in each venue. This system cannot be refocused or amended in any way.

## Radio Microphones

- If you would like Gilded Balloon to source radio mics for your show, you can do so in the technical questionnaire on Eventotron, or by getting in touch with the Technical Manager at [technical@gildedballoon.co.uk](mailto:technical@gildedballoon.co.uk)
- In the United Kingdom, there are two legal mix frequencies for Radio Microphones; 38 and 70
- If your radio microphone does not fall into one of these two channels, you will not be allowed to use it
- If your radio microphone is on channel 38, you will be required to provide a copy of your license prior to being able to plug in and use your microphone on our system

# GILDED BALLOON TEVIOT NIGHTCLUB TECHNICAL SPECIFICATIONS 2019



If you need to purchase a radio microphone licence for the duration of the festival please contact the Technical Manager at: [technical@gildedballoon.co.uk](mailto:technical@gildedballoon.co.uk) who will be able to help you through the process.

## PROJECTION

There is a projector available for use in the Nightclub. The projector is mounted to the ceiling and cannot be refocused in any way.

<b>Equipment</b>	
PROJECTOR	Casio a XJ-H2650-UJ 3500 lumen output Widescreen WXGA
SCREEN	4:3 screen, motorised

Please note that there is a **£5 recharge** per show for use of the projector to cover any maintenance fees. If you have any questions, please contact production at [production@gildedballoon.co.uk](mailto:production@gildedballoon.co.uk)

## DRESSING ROOM & STORAGE

- There is a small dressing room to the rear of the performance space and is shared with all other shows performing in the Nightclub
- This space is also used for scenic storage
- There is a small storage area SR of the stage
- All set items must easily pass through a standard door.

## ACCESS

THE NIGHTCLUB is located at:

Gilded Balloon  
Teviot Row House  
13 Bristo Square  
Edinburgh  
EH8 9AJ

Teviot Row House is vehicle accessible via Charles Street Lane via Crichton Street  
Entry for loading is from the rear lane, through 4 sets of standard width doors, and up a set of stairs

## There is no parking at Teviot Row House

## ♿ ACCESSIBILITY

Wheelchair Access, Lift Access, 2 Wheelchair Spaces, Accessible Facilities, Accessible Toilets

There is not currently level access via the main doors of Teviot due to nearby construction works, however there is an accessible lift via the Garden entrance. Lifts are available to most floors and there is a variety of seating throughout the venue.

Please note the stage is not wheelchair accessible, there is a 300mm step onto the stage.

# GILDED BALLOON TEVIOT NIGHTCLUB TECHNICAL SPECIFICATIONS 2019



## GB TECHNICAL OPERATOR FEES

- The venue has one Technician assigned to it. They will oversee all technical rehearsals and turnarounds
- In this venue there is a mandatory charge of £15 per performance - this is a turnaround technician charge to ensure turnarounds run smoothly and shows run on time in the venue. It is up to the company to provide additional staff as required to help with the turnaround between shows
- If you require a GB technician to operate lighting and/or sound an operator fee will be charged at settlement (see below)
- Companies are welcome to bring their own qualified Technicians but **must** ensure the person designated for the role is **suitably technically competent** to operate the venue equipment
- GB technicians are happy to assist staff as much as required during the technical rehearsals, but should additional assistance be required once the run has begun, GB Operator fees will be charged

Fee Type	What's Included
<b>Turnaround Technician</b>  Mandatory Fee (charged at settlement)	Turnaround Technician fee including show Up/Down (Snd + LX)  £15 per performance + VAT  (For the avoidance of doubt show up/down includes: Set show lighting state/mic & mic stand and general SM duties etc.)  Total to pay at settlement = £15 per performance
<b>GB Operator (SND or LX)</b>  Optional Fee (charged at settlement)	Full Show Operation by GB Technical Operator of Sound <b>AND</b> Lighting  Turnaround Technician fee plus £5 per crew member per performance + VAT  Total to pay at settlement = £20 per performance

## SECURITY

- Although Gilded Balloon endeavour to ensure the safety of your venue, please be advised we do not accept responsibility for any items left in the venue. We recommend taking extra precaution when storing your items each day.
- Take all computers, tablets, and desktop projectors with you every day

## NOTES

- There are no wardrobe or laundry facilities at Teviot Row House
- Any additional staff or items of equipment, which the management are requested to provide will be charged to the visiting company
- Any electrical equipment you wish to use must have a current PAT certificate dated less than 12 months prior. All electrical items must also be cleared with us before use. We reserve the right to refuse the use of any equipment, which is deemed unsafe
- Each company is assigned a get in/rehearsal time prior to their first performance. This is the time for you to load your set and props into the venue and to re-tech your show. This time is also for the venue technician to learn the requirements of your production

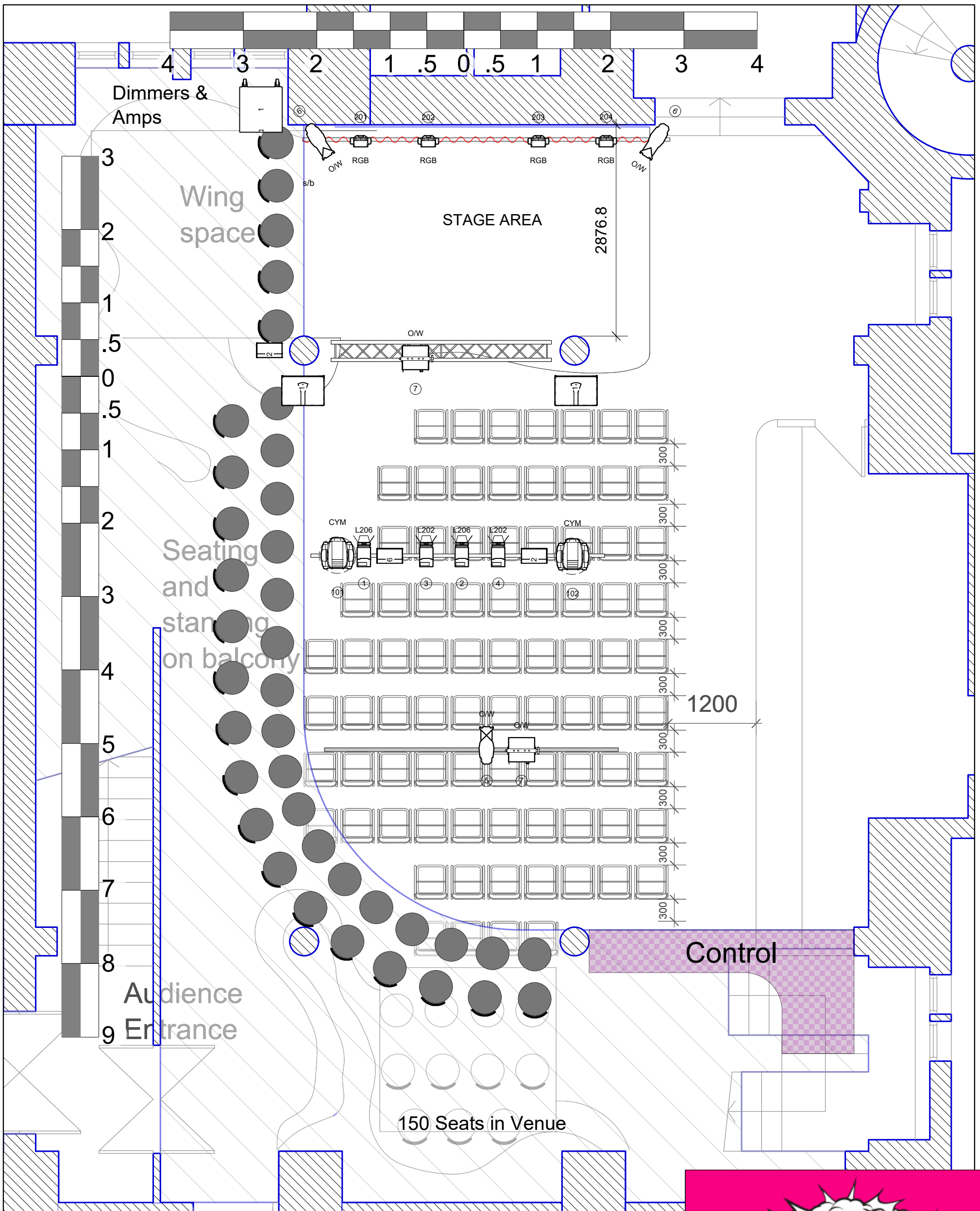
# GILDED BALLOON TEVIOT NIGHTCLUB TECHNICAL SPECIFICATIONS 2019



- You will need to allow enough time to rehearse your daily turnaround and set storage. Please note that your time slot must include get-in and get-out time
- All use of naked flames, smoke, haze, strobe, laser or pyrotechnic effects must be cleared with management before bringing onsite. Smoking is not permitted in any venues, on or offstage however e-cigarettes or other non-burning stage types are allowed
- At the end of the festival, please arrange for removal or disposal of your set and any unused publicity material. Any company who does not comply will be charged for the cost of disposal. The base charge for disposal is £200.00 but may be increased.
- Please note, since this is a temporary conversion and not a permanent performance space, all measurements and quantities quoted in the above specification are approximate and may be subject to change.

For the most current plans and specifications or to discuss any other queries please get in touch with the production team: [production@gildedballoon.co.uk](mailto:production@gildedballoon.co.uk), [technical@gildedballoon.co.uk](mailto:technical@gildedballoon.co.uk)





Legend		Accessories	
	ETC S4 19°		Barn Door
	ETC S4 50°		Template Holder
	Minulette Fresnel		Q7
	Strand Coda 500/1		E3
	Martin Mac 700 Profile		C7 Sub
	Martin Aura		

NIGHTCLUB	
VENUE PLAN (END ON SEATING)	
1:50 AT A3	SC
28/04/2019	TEVIOT ROW HOUSE