

GILDED BALLOON

NATIONAL MUSEUM OF SCOTLAND

AUDITORIUM

TECHNICAL SPECIFICATIONS 2019



SEATING

- The National Museum of Scotland Auditorium has a raked seating bank with a total capacity of 210

STAGE

- The stage area is 3m x 7m
- The stage is raised 300mm from the floor
- Entrance to the stage is USL and USR
- There are no treads downstage into the audience.
- There is a crossover backstage through a corridor behind the Auditorium.

MASKING

- Black Tabs rigged on upstage chord on track to close/reveal Projector Screen
- There are wings either side fixed to the goal post truss.

SUSPENSION

- There is a Goal Post Truss 9.5m across x 4m from the ground of the Auditorium (3.7m from the stage), which sits over the centre of the stage.
- There is no fly bar
- Any items hung from the truss are at the discretion of the Technical Manager.

GILDED BALLOON

NATIONAL MUSEUM OF SCOTLAND

AUDITORIUM

TECHNICAL SPECIFICATIONS 2019



LIGHTING

The control position for both lighting and sound is in the centre of the top level of the auditorium, in line with the back row of the audience.

It is possible for an operator to operate both sound and lights from this position.

Equipment

CONTROL:	Jester ML24, 2 Universes
LAMPS:	12x Source 4 Junior stage lamps
	4x ETC S4 Parnels
	6x RGB LED Pars
	House Lights from Panel Control

- Good general cover of warm and cool light is provided. This is split into 4 areas (SL, CSL, CSR & SR).
- 4 S4 Parnells in OW to provide a soft stage Wash
- A centre stage spot is provided, focused with a semi-hard edge to provide light for a single performer
- There are 6 Red/Green/Blue LED PARs at the rear of the stage which can be used to mix most colours

The general cover cannot be refocused or recoloured in any way.

- All dimming channels run on 15A round pin connectors
- Blackout is acceptable, 'full' blackout is not possible due to emergency lighting regulations.

General Information

Additional lanterns can be rigged as company specials, but due to rigging and power considerations these must be approved for use before arrival. As well as fixtures, cabling for any extras must be provided to reach the dimmers or stage boxes (please get in touch to discuss prior to arrival).

Please note: The FOH lighting bar is inaccessible once rigged, any specials required must be rigged and focused before the theatre opens to public during tech fit up.

All electrical equipment brought into the venue must be PAT tested.

If you would like any help sourcing additional fixtures, please contact the technical team at technical@gildedballoon.co.uk

The above information is subject to change - for the most current plans and specifications, to discuss company specials or for any other Lighting related queries please get in touch with the Technical Manager at: technical@gildedballoon.co.uk

Effects

There is a potential for a hazer to be added to the Museum kit. If your show requires a hazer, please contact production at production@gildedballoon.co.uk

SOUND

GILDED BALLOON

NATIONAL MUSEUM OF SCOTLAND

AUDITORIUM

TECHNICAL SPECIFICATIONS 2019



The control position for both lighting and sound is in the centre of the top level of the auditorium, in line with the back row of the audience. It is possible for an operator to operate both sound and lights from this position.

Equipment	
CONTROL	1 x Yamaha LS9-16 mixing console
AMPLIFICATION	5 x d&b D6 Stereo Amplifier x6
SPEAKERS	2 x d&b E12 Loudspeaker
	4 x d&b QSUB
	5 x d&b E6 Loudspeaker
	2 x d&b Q7 E12D Top Loudspeaker
	3 x d&b Ci80 Loudspeaker
PLAYBACK	Via supplied PC DI box and Mini Jack cable
MICS & D.I	4 x BSS AR133 Active D.I.
	2 x Shure SM 57
	3 x Shure SM 58 Microphone
	4 x Tall Black Microphone Stands
	1 x One Handed Microphone Stand
CABLING	Various microphone and Jack cables

We provide an audio system of good, undistorted, even coverage across the entire seating area sufficiently powerful to satisfy most productions. If you feel that you have specific requirements regarding the sound system in a venue, please be in touch with our Technical Manager at: technical@gildedballoon.co.uk

Please Note: Prior to your arrival, a professional audio engineer tunes the audio rig in each venue. This system cannot be refocused or amended in any way.

Radio Microphones

- If you would like Gilded Balloon to source radio mics for your show, you can do so in the technical questionnaire on Eventotron, or by getting in touch with the Technical Manager at technical@gildedballoon.co.uk
- In the United Kingdom, there are two legal mix frequencies for Radio Microphones; 38 and 70
- If your radio microphone does not fall into one of these two channels, you will not be allowed to use it
- If your radio microphone is on channel 38, you will be required to provide a copy of your license prior to being able to plug in and use your microphone on our system

If you need to purchase a radio microphone licence for the duration of the festival please contact the Technical Manager at: technical@gildedballoon.co.uk who will be able to help you through the process.

PROJECTION

Projection is possible in this venue. AV through VGA can be run from operating position or stage

GILDED BALLOON

NATIONAL MUSEUM OF SCOTLAND

AUDITORIUM

TECHNICAL SPECIFICATIONS 2019



Equipment

PROJECTOR	Christie Roadster HD 10K-M projector 10,000 lumen output HD Definition
SCREEN	Motorised
Widescreen	7700mm x 3200mm (Height of Screen inhibited by Goal Post Truss)
Academy	4450mm x 3200mm

Please note that there is a £5 recharge per show for use of the projector to cover any maintenance fees. If you have any questions, please contact production at production@gildedballoon.co.uk

DRESSING ROOM & STORAGE

- There is a dressing room available one level above stage. This will be shared amongst all companies wishing to use this space.
- The dressing room has a swipe access entry. The venue manager will be able to give you access to this from the auditorium foyer.
- This space will also be available for storage.
- There is also a small amount of storage in the corridor behind the auditorium at ground level.
- All storage is at the discretion of the venue technician.
- All set items must easily pass through a standard door.
- It is not possible to store items in other parts of the building.

ACCESS

The AUDITORIUM is located at: National Museum of Scotland
Chambers St
Edinburgh
EH1 1JF

The National Museum of Scotland and has level access from Lothian Street.
Entry for loading is on the corner of West College Street and South College Street.
There is no parking available at the Museum.

Please contact production if you have any further queries regarding access.

GB TECHNICAL OPERATOR FEES

- The venue has two technicians who will oversee all technical rehearsals and turnarounds.
- In this venue there is a mandatory charge of £15 per performance - this is a turnaround technician charge to ensure turnarounds run smoothly and shows run on time in the venue. It is up to the company to provide additional staff as required to help with the turnaround between shows.
- If your show requires our technicians to operate **lighting** and/or **sound** and/or to carry out onstage cues or to stay for the duration of the performance for any other reason an operator fee will be charged at settlement (see below).
- A reduced rate is charged when the show simply requires lights up/down and is included as part of the turnaround technician fee (one cue to put light on stage and set microphone live then one cue to return to audience exit state).

GILDED BALLOON

NATIONAL MUSEUM OF SCOTLAND

AUDITORIUM

TECHNICAL SPECIFICATIONS 2019



- If you require more technicians than details below, each additional Technician will be charged at a rate of £5 per performance plus VAT
- Companies are welcome to bring their own qualified Technicians but **must** ensure the person designated for the role is **suitably technically competent** to operate the venue equipment.
- GB Technicians are happy to assist staff as much as required during the technical rehearsals, but should additional assistance be required once the run has begun, GB Operator fees will be charged.

The rates below are applicable the NMS Auditorium **only**.

Fee Type	What's Included
Turnaround Technician Mandatory Fee (charged at settlement)	Turnaround Technician fee including show Up/Down (Snd OR LX) £15 per performance + VAT (For the avoidance of doubt show up/down includes: Set show lighting state/mic & mic stand etc.) Total to pay at settlement = £15 per performance
GB Operator (SND or LX) Optional Fee (charged at settlement)	Full Show Operation by GB Technical Operator of Sound OR Lighting Turnaround Technician fee plus £5 per crew member per performance + VAT Total to pay at settlement = £20 per performance
GB Operator (SND + LX) Optional Fee (charged at settlement)	Full Show Operation by GB Technical Operator of Sound AND Lighting Turnaround Technician fee plus £5 per crew member per performance + VAT Total to pay at settlement = £25 per performance

SECURITY

- Although Gilded Balloon endeavour to ensure the safety of your venue, please be advised we do not accept responsibility for any items left in the venue. We recommend taking extra precaution when storing your items each day.
- Take all computers, tablets, and desktop projectors with you every day

NOTES

- There are no wardrobe or laundry facilities at the NMS
- Any additional staff or items of equipment, which the management are requested to provide will be charged to the visiting company

GILDED BALLOON

NATIONAL MUSEUM OF SCOTLAND

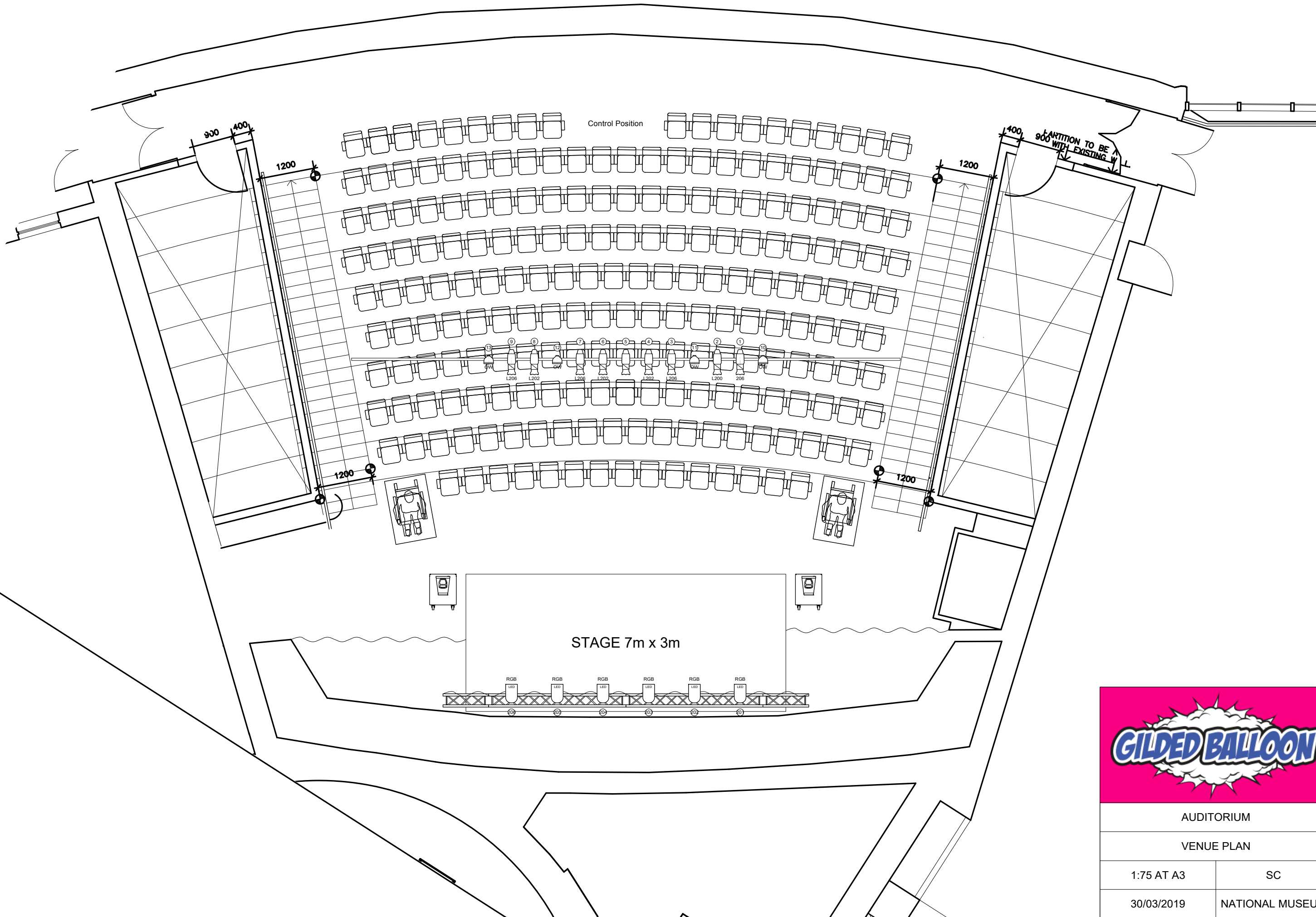
AUDITORIUM

TECHNICAL SPECIFICATIONS 2019



- Any electrical equipment you wish to use must have a current PAT certificate dated less than 12 months prior. All electrical items must also be cleared with us before use. We reserve the right to refuse the use of any equipment, which is deemed unsafe
- Each company is assigned a get in/rehearsal time prior to their first performance. This is the time for you to load your set and props into the venue and to re-tech your show. This time is also for the venue technician to learn the requirements of your production
- You will need to allow enough time to rehearse your daily turnaround and set storage. Please note that your time slot must include get-in and get-out time
- All use of naked flames, smoke, haze, strobe, laser or pyrotechnic effects must be cleared with management before bringing onsite. Smoking is not permitted in any venues, on or offstage however e-cigarettes or other non-burning stage types are allowed
- At the end of the festival, please arrange for removal or disposal of your set and any unused publicity material. Any company who does not comply will be charged for the cost of disposal. The base charge for disposal is £200.00 but may be increased.
- Please note, since this is a temporary conversion and not a permanent performance space, all measurements and quantities quoted in the above specification are approximate and may be subject to change.

For the most current plans and specifications or to discuss any other queries please get in touch with the production team: production@gildedballoon.co.uk, technical@gildedballoon.co.uk



AUDITORIUM	
VENUE PLAN	
1:75 AT A3	SC
30/03/2019	NATIONAL MUSEUM