

GILDED BALLOON TEVIOT DEBATING HALL TECHNICAL SPECIFICATIONS 2019



SEATING

- The Debating Hall has 9 rows of seats on the floor followed by 7 rows on rake at the back of the room.
- There is a balcony area with built in benches which provide additional seating.
- The total capacity is **350**.

STAGE

- The performance area is approximately **11m wide by 5m deep** and is covered by black dance floor.
- The stage is raised 1000mm above floor level.
- There is limited backstage space up stage centre, which is used for storage.
- Entrances to the stage are USL and USR.
- There are two sets of steps built into the stage, DSL and DSR, these can be covered over to make an unbroken DS edge.
- There is no crossover behind the stage, but it is possible to cross around the house to make an entrance from SL.

MASKING

GILDED BALLOON TEVIOT DEBATING HALL TECHNICAL SPECIFICATIONS 2019



- There are 2 sets of legs either side of the proscenium stage. They are approximately 1000mm deep and do not afford an unseen entrance, or cross from US to DS.

SUSPENSION

- The front of house (advance) truss is hung at 7000mm from the floor of the venue.
- The main rig truss is hung 7000mm over the floor (6000mm over the stage deck).
- There are no positions over the centre of the stage
- There is one flying bar on the US truss to allow for hanging lightweight scenic elements or banners
- Lightweight items of Scenery may be hung at the discretion of the Technical Manager.

LIGHTING

- The control position for both lighting and sound is in a balcony box at the rear of the room
- Due to the space needed for the respective consoles and the layout of the control box it is **not** possible for a single person to operate both lighting and sound

Equipment

CONTROL	ETC EOS
DIMMING	24 x 16Amp (8 unused in standard rig)

- A good general cover is provided over the performance area (L206). This is split into 8 areas - 4 wide, 2 deep
- There is also cover from the sides (equivalent to proscenium boom positions)

This general cover cannot be refocused or recoloured in any way

Moving Lights

- There are a wide range of moving lights in the space, available for use at no additional cost
- At the front there are 4 Viper Profiles and 2 Mac 700 Washes
- At the rear there are 4 Mac Viper Profile and 6 Martin Mac Aura LED Wash Units
- On the sides of the stage there are 2 Martin Mac Aura LED Wash units
- There is a flown semi-circular arch of truss rigged with 12 Mac 101 RGB Units
- This may be flown in or out for yours how (but not during) subject to approval from the Production Team (due to scheduling and staffing limitations this may not be possible for all productions)
- The Mac 101's may be used regardless of the flying position of the truss; however, we cannot guarantee the effectiveness from the long throw of the out position

Effects

- Haze and Smoke are available in the Debating Hall, however a charge may be levied for fluid usage
- A mirror ball is rigged above the auditorium. There are no fixed focus fixtures for this (for use in conjunction with moving lights).
- There are also a number of lycra 'sails' which hang above the auditorium and are lit with RGB LED fixtures

GILDED BALLOON TEVIOT DEBATING HALL TECHNICAL SPECIFICATIONS 2019



General Information

Additional lanterns can be rigged as company specials, but due to rigging and power considerations these must be approved for use before arrival. As well as fixtures, cabling for any extras must be provided to reach the dimmers or stage boxes (please get in touch to discuss prior to arrival).

All electrical equipment brought into the venue must be PAT tested.

If you would like any help sourcing additional fixtures, please contact the technical team at technical@gildedballoon.co.uk

The above information is subject to change - for the most current plans and specifications, to discuss company specials or for any other Lighting related queries please get in touch with the Technical Manager at: technical@gildedballoon.co.uk

SOUND

- The control position for both lighting and sound is in the balcony box at the rear of the room
- Due to the space needed for the respective consoles and the layout of the control box it is **NOT** possible for a single person to operate both lighting and sound.

Equipment

CONTROL	Yamaha CL5 72 MONO 8 Stereo Digital Mixing Console
AMPLIFICATION	5 x d&b Audiotechnik D6 Stereo Amplifier 1 x d&b Audiotechnik D12 Stereo Amplifier 4 x d&b Audiotechnik C4 Sub Bass Speaker 4x d&b Audiotechnik C7 Top Speaker 2 x d&b Audiotechnik JSUB Speaker 1 x d&b Audiotechnik Q10 Loudspeaker 4 x d&b Audiotechnik E10 Loudspeaker 2 x Genelec 8030 Compact Bi-Amped reference Monitor
PLAYBACK	Via supplied PC DI box and Mini Jack cable
MICROPHONES & STANDS	12 x BSS AR133 DI Box 10 x Shure SM58 Microphone 6 x Shure SM57 Microphone 6 x Shure Beta SM57A Microphone 4 x Neumann KM 140 Microphone 4 x Sennheiser E904 Microphone 2 x Sennheiser E906 Microphone 1 x AKG D112 Condenser Microphone 2 x AKG SE300B Condenser Microphone 12 x Tall Black Mic Stand 10 x Short Black Mic Stand

GILDED BALLOON TEVIOT DEBATING HALL TECHNICAL SPECIFICATIONS 2019



FOLDBACK MONITORING	1 x One Handed Mic Stand 1 x d&b Audiotechnik E12 Loudspeaker 5 x d&b Audiotechnik MAX2 Wedge Monitor 1 x d&b Audiotechnik Q10 Sub Bass Speaker
CABLING	4 x d&b Audiotechnik D6 Stereo Amplifier Various microphone and Jack cables

We provide an audio system of good, undistorted, even coverage across the entire seating area sufficiently powerful to satisfy most productions. If you feel that you have specific requirements regarding the sound system in a venue, please be in touch with our Technical Manager at: technical@gildedballoon.co.uk

Please Note: Prior to your arrival, a professional audio engineer tunes the audio rig in each venue. This system cannot be refocused or amended in any way.

Radio Microphones

- If you would like Gilded Balloon to source radio mics for your show, you can do so in the technical questionnaire on Eventotron, or by getting in touch with the Technical Manager at technical@gildedballoon.co.uk
- In the United Kingdom, there are two legal mix frequencies for Radio Microphones; 38 and 70
- If your radio microphone does not fall into one of these two channels, you will not be allowed to use it
- If your radio microphone is on channel 38, you will be required to provide a copy of your license prior to being able to plug in and use your microphone on our system

If you need to purchase a radio microphone licence for the duration of the festival please contact the Technical Manager at: technical@gildedballoon.co.uk who will be able to help you through the process.

PROJECTION

There is a projector available for use in the Debating Hall. The projector is in the Ops Box and is able to be operated from both Ops Position and from the stage.

Equipment	
PROJECTOR	Panasonic PT-DW750LB 7000 lumens of output Dual Lamps
SCREEN	3.5m, 16:9, motorised

Please note that there is a **£5+VAT recharge** per show for use of the projector to cover any maintenance fees.

If you have any questions, please contact production at production@gildedballoon.co.uk

DRESSING ROOM

- There is a chorus dressing room available one level below the stage entrance of the venue

GILDED BALLOON TEVIOT DEBATING HALL TECHNICAL SPECIFICATIONS 2019



- The dressing room has a coded entry. The entry code will be given to each company using the facility

STORAGE

- There is a small storage space at stage level (USC) in this venue.
- A green room; SR of the stage, will accommodate the storage for most companies using this venue

All set items must easily pass through a standard door.

ACCESS

THE DEBATING HALL is located at: Gilded Balloon
Teviot Row House
13 Bristo Square
Edinburgh
EH8 9AJ

Entry for loading is from the front of the building through the front doors. There is a standard width door, to load into the venue itself.

There is no parking at Teviot Row House

♿ ACCESSIBILITY

Wheelchair Access, Lift Access, 6 Wheelchair Spaces, Accessible Facilities, Accessible Toilets

Please be aware that the stage is not wheelchair accessible. There are 5 steps up to the stage. Please also be aware that the dressing room facilities are not wheelchair accessible, there are approximately 10 steps down a turret staircase to the dressing room.

Please contact production if you have any further queries regarding accessibility.

GB TECHNICAL OPERATOR FEES

- The venue has a Stage Manager, Assistant Stage Manager, Lighting Operator and Sound Operator who will oversee all technical rehearsals and turnarounds.
- In this venue there is a mandatory charge of £15 per performance - this is a turnaround technician charge to ensure turnarounds run smoothly and shows run on time in the venue. It is up to the company to provide additional staff as required to help with the turnaround between shows.
- If your show requires our technicians to operate **lighting** and/or **sound** and/or to carry out onstage cues or to stay for the duration of the performance for any other reason an operator fee will be charged at settlement (see below).
- A reduced rate is charged when the show simply requires lights up/down and is included as part of the turnaround technician fee (one cue to put light on stage and set microphone live then one cue to return to audience exit state).

GILDED BALLOON TEVIOT DEBATING HALL TECHNICAL SPECIFICATIONS 2019



- If you require more technicians than details below, each additional Technician will be charged at a rate of £5 per performance plus VAT
- Companies are welcome to bring their own qualified Technicians but **must** ensure the person designated for the role is **suitably technically competent** to operate the venue equipment.
- GB Technicians are happy to assist staff as much as required during the technical rehearsals, but should additional assistance be required once the run has begun, GB Operator fees will be charged.

The rates below are applicable the Debating Hall **only**.

Fee Type	What's Included
Turnaround Technician Mandatory Fee (charged at settlement)	Turnaround Technician fee including show Up/Down (Snd OR LX) £15 per performance + VAT (For the avoidance of doubt show up/down includes: Set show lighting state/mic & mic stand etc.) Total to pay at settlement = £15 per performance
GB Operator (SND or LX) Optional Fee (charged at settlement)	Full Show Operation by GB Technical Operator of Sound OR Lighting Turnaround Technician fee plus £5 per crew member per performance + VAT Total to pay at settlement = £20 per performance
GB Operator (SND + LX) Optional Fee (charged at settlement)	Full Show Operation by GB Technical Operator of Sound AND Lighting Turnaround Technician fee plus £5 per crew member per performance + VAT Total to pay at settlement = £25 per performance
GB Operator (SND + LX + SM) Optional Fee (charged at settlement)	Full Show Operation by GB Technical Operator of Sound AND Lighting AND Stage Manager Turnaround Technician fee plus £5 per crew member per performance + VAT Total to pay at settlement = £30 per performance

SECURITY

- Although Gilded Balloon endeavour to ensure the safety of your venue, please be advised we do not accept responsibility for any items left in the venue. We recommend taking extra precaution when storing your items each day.
- Take all computers, tablets, and desktop projectors with you every day

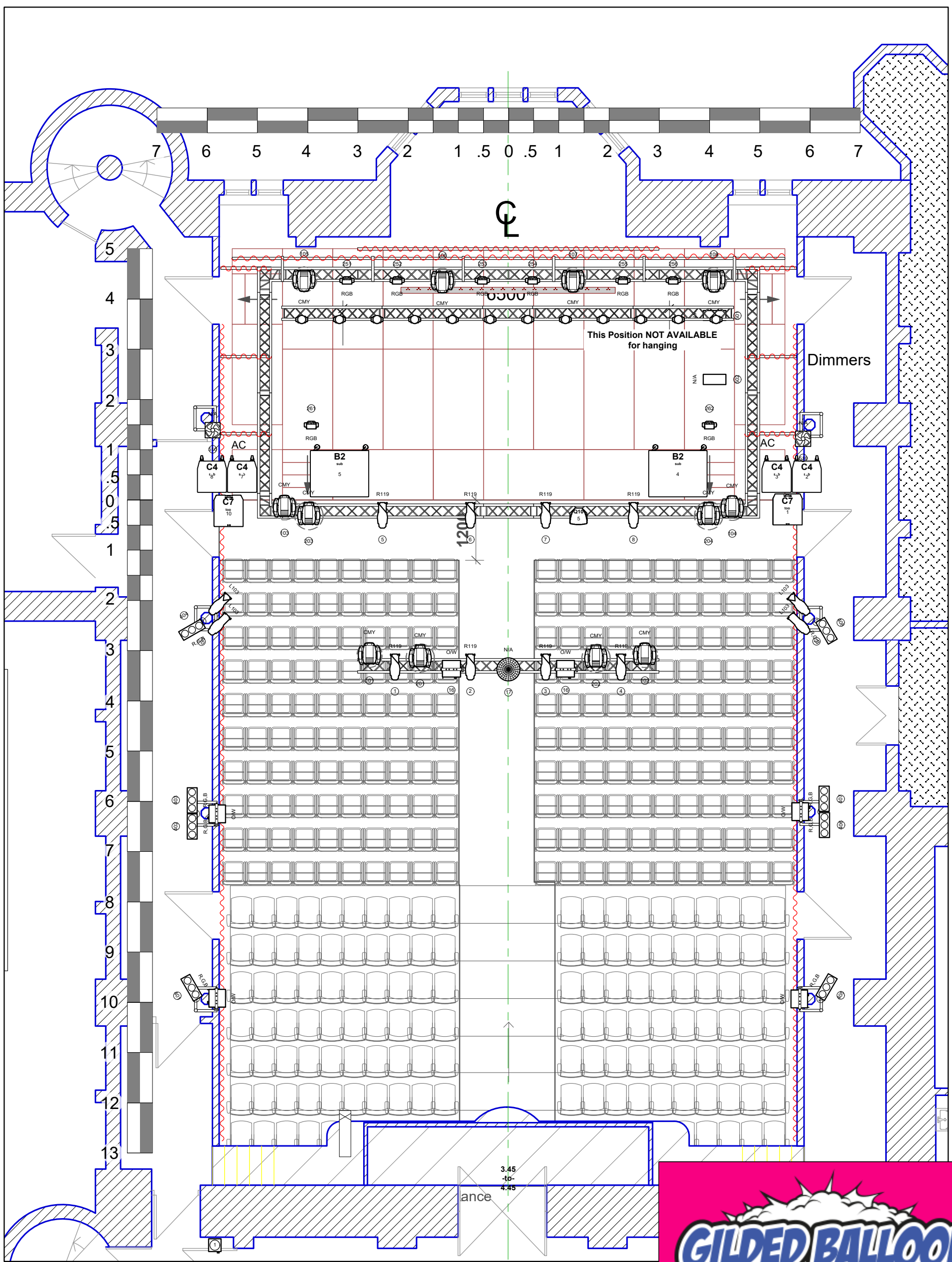
GILDED BALLOON TEVIOT DEBATING HALL TECHNICAL SPECIFICATIONS 2019



NOTES

- There are no wardrobe or laundry facilities at Teviot Row House
- Any additional staff or items of equipment, which the management are requested to provide will be charged to the visiting company
- Any electrical equipment you wish to use must have a current PAT certificate dated less than 12 months prior. All electrical items must also be cleared with us before use. We reserve the right to refuse the use of any equipment, which is deemed unsafe
- Each company is assigned a get in/rehearsal time prior to their first performance. This is the time for you to load your set and props into the venue and to re-tech your show. This time is also for the venue technician to learn the requirements of your production
- You will need to allow enough time to rehearse your daily turnaround and set storage. Please note that your time slot must include get-in and get-out time
- All use of naked flames, smoke, haze, strobe, laser or pyrotechnic effects must be cleared with management before bringing onsite. Smoking is not permitted in any venues, on or offstage however e-cigarettes or other non-burning stage types are allowed
- At the end of the festival, please arrange for removal or disposal of your set and any unused publicity material. Any company who does not comply will be charged for the cost of disposal. The base charge for disposal is £200.00 but may be increased.
- Please note, since this is a temporary conversion and not a permanent performance space, all measurements and quantities quoted in the above specification are approximate and may be subject to change.

For the most current plans and specifications or to discuss any other queries please get in touch with the production team: production@gildedballoon.co.uk, technical@gildedballoon.co.uk



Legend			

350 SEATS IN VENUE



DEBATING HALL	
VENUE PLAN	
1:75AT A3	SC
30/04/2019	TEVIOT