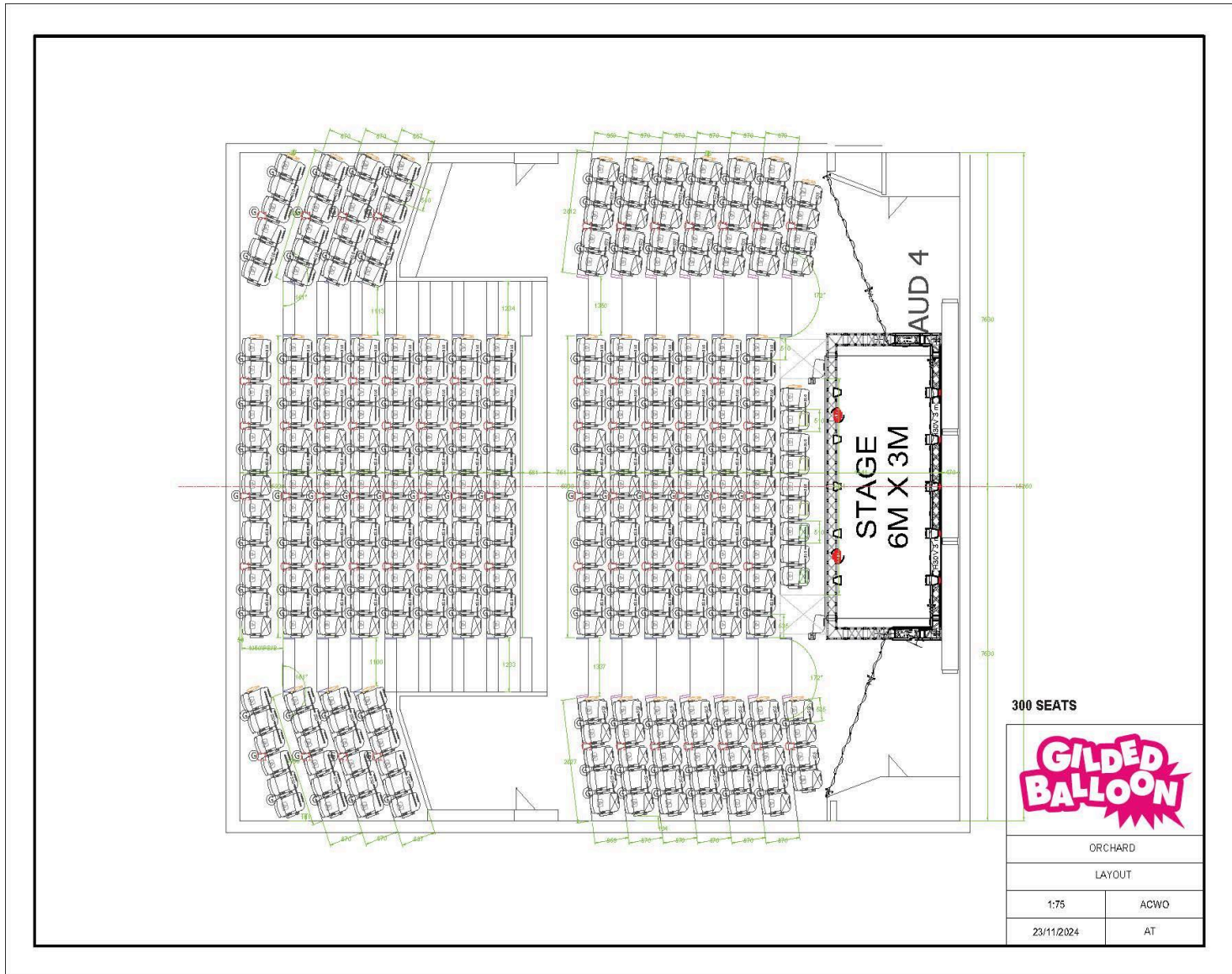


# GILDED BALLOON AT APPLETON TOWER ORCHARD TECHNICAL SPECIFICATIONS 2025



## SEATING

- The venue has a raked seating bank with a total capacity of 300.

## STAGE

- The stage area is 3 x 6m.
- The stage is at floor level.



- there are wings SL & SR
- Entrance to the stage from BOH area is only SR

## MASKING

- There are soft black drapes on the rear and sides of the performance area.

## SUSPENSION

- There is a Goal Post Truss 6.5m across x 4m from the stage floor, which sits over the rear and side edges of the stage
- Any items hung from the truss are at the discretion of the Technical Manager.

## DRESSING ROOM & STORAGE

- There is a shared space available next to the venue. This will be shared with another venue and amongst all companies wishing to use this space.
- This space will also be available for storage.
- There is also a small amount of storage in the corridor behind the venue at ground level.
- All storage is at the discretion of the venue technician.
- All set items must easily pass through a standard door.

## ACCESS

The venue is located at: 11 Crichton St,  
Newington,  
Edinburgh, EH8 9LE

- The venue has multiple entrances and exits with a mixture of lifts, stairs and level access. Please co-ordinate with production prior to arrival so we can direct you to the best entrance.
- Entry for loading is on Windmill Street.
- Please contact production to arrange delivery of large set items.
- Please be aware there are no parking facilities at the venue. Standard central city parking fees apply to parking around the venue.

## SECURITY

Please remember that this is a festival environment. We cannot accept any responsibility for any items lost or stolen within the building. We work hard to ensure the venues are safe and recommend the following:

- That you do not leave any valuable personal items in the venue.
- That you take any valuable items away with you every day.
- That electronics should not be left in the venue, unless they are wired into our system for your production.



## LIGHTING

- The control position for both lighting and sound is located at the back of the audience behind the back row and off to one side.
- It is possible for an operator to operate both sound and lights from this position.

### Control

- ETC EOS CONSOLE

### Lighting Fixtures

- 5 x Fresnel CW/WW
- 1 x FOH spot
- 4 x Profile for FOH wash
- 2 x Mac Aura
- 5 x RGB LED Pars (Backlight)
- House Lights from control panel

### Effects

- Unfortunately, there is no smoke or haze or fire allowed to be used in this venue.

### General Information

- We recommend the use of our supplier to hire any additional equipment. If the hire is arranged before the deadline (usually in mid-July) it may be sent with our main hire, saving you transportation costs. If you would like any help sourcing additional fixtures, please contact the production team at [production@gildedballoon.co.uk](mailto:production@gildedballoon.co.uk).
- Additional lanterns can be rigged as company specials, but due to rigging and power considerations these must be approved for use before arrival. As well as fixtures, cabling for any extras must be provided to reach the dimmers or stage boxes (please get in touch to discuss prior to arrival).
- All electrical equipment brought into the venue must be PAT tested.
- "full" blackout is not possible due to emergency lighting regulations.
- A centre stage spot is provided, focused with a semi-hard edge to provide light for a single performer.
- A good general cover is provided over the performance area.

**This general cover cannot be refocused or recoloured in any way**



## SOUND

- The control position for both lighting and sound is located at the back of the audience behind the back row and off to one side.
- It is possible for an operator to operate both sound and lights from this position.

### Control

- Digital sound console

### Speakers

- 2 x D&B E15X SUB BASS SPEAKER or equivalent
- 2 x D&B Y7P LOUDSPEAKER or equivalent
- 3 x D&B Ci80 LOUDSPEAKER or equivalent

### Foldback

- 2 x Ci80 or equivalent

### Microphones, DI's, And Stands

- 3 x DI BOX
- 3 x SHURE SM58 DYNAMIC CARDIOID MICROPHONE
- 3 x MICROPHONE STAND TALL - BLACK
- 1 x PULSE ONE HANDED MIC STAND

### Playback & Qlab

- We will provide whatever cables you require to be able to plug your audio devices into our sound system but we do not supply a machine to play sound files from.
- A mac with standard Qlab (which allows you to play stereo audio tracks and fade them up and down. And play and stop video files to 1 projector but DOES NOT allow you to FADE video files.) can be hired from us to play back sound and video cues for £5 per show.

We provide an audio system of good, even coverage sufficiently powerful to satisfy most productions. If you feel that you have specific requirements regarding the sound system, please be in touch with our production manager at [production@gildedballoon.co.uk](mailto:production@gildedballoon.co.uk).

***Please Note: Prior to your arrival, a professional audio engineer tunes the audio rig in each venue. This system cannot be refocused or amended in any way.***

### Radio Microphones

- If you would like Gilded Balloon to source radio mics for your show, you can do so in the technical questionnaire on Eventotron, or by getting in touch with the Production Manager at [production@gildedballoon.co.uk](mailto:production@gildedballoon.co.uk).
- If you are bringing your own radio mics please indicate so in your technical questionnaire on Eventotron or by getting in touch with the Production Manager at [production@gildedballoon.co.uk](mailto:production@gildedballoon.co.uk).

## GILDED BALLOON AT APPLETON TOWER

ORCHARD

TECHNICAL SPECIFICATIONS 2025



- Gilded Production Will coordinate radio mic frequencies across their sites and deal with all radio mic frequency licensing.

The above information is subject to change - for the most current plans and specifications, to discuss company needs, radio microphones or for any other Sound related queries please get in touch with the Production Manager at: [production@gildedballoon.co.uk](mailto:production@gildedballoon.co.uk).

### PROJECTION

There is no projector available in The Other Yin as a part of the venue kit. If you have vision requirements please contact the production team for further assistance

### GB TECHNICAL OPERATOR FEES

- If you request a member of the Gilded Balloon technical team to operate lighting and/or sound cues, this service will be charged at a rate of £30 plus VAT per performance. Please note that it may not be the same member of the technical team across all performances.
- Visiting Companies are welcome to bring their own qualified technicians but must ensure the person designated for the role is suitably technically competent to operate the venue equipment. If the production is technically complex, we would recommend bringing your own technical operator.
- If you need extra support during turnarounds and require extra staff, we can provide this at a rate of £15 plus VAT per performance.

Service	What's included	Cost (charged at settlement)
Technical Operator	Turnaround assistance and full operation of sound and/or lighting cues throughout the show.	£30 + VAT per performance

### NOTES

- There are no wardrobe or laundry facilities at Gilded Balloon.
- Any additional staff or items of equipment, which the management are requested to provide will be charged to the visiting company.
- Any electrical equipment you wish to use must have a current PAT certificate dated less than 12 months prior. All electrical items must also be cleared with us before use. We reserve the right to refuse the use of any equipment.
- Each company is assigned a get in/rehearsal time prior to their first performance. This is the time for you to load your set and props into the venue and to re-tech your show. This time is also for the venue technician to learn the requirements of your production.
- You will need to allow enough time to rehearse your daily turnaround and set storage. Please note that your time slot must include get-in and get-out time.
- All use of naked flames, smoke, haze, strobe, laser or pyrotechnic effects must be cleared with management before bringing them onsite. Smoking is not permitted in any venues.

## GILDED BALLOON AT APPLETON TOWER

ORCHARD

TECHNICAL SPECIFICATIONS 2025

---



- At the end of the festival, please arrange for removal or disposal of your set and any unused publicity material. Any company who does not comply will be charged for the cost of disposal. The base charge for disposal is £200.00 but may be increased.
- Please note, since this is a temporary conversion and not a permanent performance space, all measurements and quantities quoted in the above specification are approximate and may be subject to change.

**For the most current plans and specifications or to discuss any other queries please get in touch with the production team: [production@gildedballoon.co.uk](mailto:production@gildedballoon.co.uk)**