

GILDED BALLOON THE SPORTSMANS



SEATING

- The Sportsmans has 5 rows of seating on the floor followed by 7 raked rows
- There is a total of **90 seats**

STAGE

- The performance area is approximately **5m wide by 2m deep** and is covered by black dance floor
- The stage is raised **300mm** above floor level
- There is a **1m x 1.5m** backstage space at the right side of the stage
- There is no crossover or SL wing space

MASKING

- Proscenium space with a SR split for entrances
- No SL and SR wing space
- No Crossover

SUSPENSION

- Front of house bar attached to the ceiling approximately **4000mm** from the floor
- Side and rear bars are formed of a freestanding scaffolding structure **4000mm** from the floor
- No overhead bars above the stage and it is not possible to add any
- No flying facilities.
- Lightweight items of scenery may be hung at the discretion of the Production Team

LIGHTING

- The control position for both lighting and sound is located on the house left of the venue halfway back
- It is possible for one person to operate both sound and lighting

Equipment	
CONTROL	Zero88 Jester 12/24
DIMMING	12 x 10Amp (5 unused in standard rig)
Max power supply loading	14kW

- Good general cover of warm (*L206*) and cold (*L202*) light is provided. This is split into 2 areas (SL & SR)
- A centre stage spot is provided, focused with a semi-hard edge to provide light for a single performer
- There are 2 Red/Green/Blue LED fixtures at the rear of the stage which can be used to mix most colours
- A soft focused breakup gobo cover is provided from two profiles at the rear of the stage

This general cover cannot be refocused or recoloured in any way

- Additional lanterns can be rigged as company specials, but due to rigging, power and weight limitations, and any rigged equipment must be approved for use before arrival.
- Cabling for any extra kit must be provided to reach the dimmers or stage boxes (please get in touch to discuss prior to arrival).
- All dimming channels run on 15A round pin connectors
- Blackout is acceptable, 'full' blackout is not possible due to emergency lighting regulations.

We recommend the use of our supplier to hire any additional equipment. If the hire is arranged before the deadline (usually in mid-July – the Production Team will advise you on this closer to the time) it may be sent with our main hire, saving you transportation costs.

We will not hire company specials on your behalf. We can assist in sourcing extra kit, however it is up to you to finalise the hire with our supplier and arrange payment.

You may source extras from elsewhere, but all electrical equipment must be PAT tested (in the last 12 months) . Paperwork to prove this will be required. We reserve the right to refuse the use of any equipment, which is deemed unsafe.

The above information is subject to change - for the most current plans and specifications, to discuss company specials or for any other Lighting related queries please get in touch with the Head of Lighting: lighting@gildedballoon.co.uk

SOUND

- The control position for both lighting and sound is located on the house left of the venue halfway back

- It is possible for one person to operate both sound and lighting

Equipment	
CONTROL	Soundcraft M8 8 Mono 4 Stereo Mixing Console
AMPLIFICATION	2 x d&b Audiotechnik D6 Stereo Amplifier
	3 x d&b Audiotechnik E6 Loudspeaker
	Yamaha PC4801
	Tannoy V6 (foldback)
PLAYBACK	1 x Denon Dnc-630 Pro CD Player
MICROPHONES & STANDS	2 x MTR3 DI Box
	1 x Orbital PC DI Box
	3 x Sure SM58 Dynamic Cardioid Microphone
	3 x K+M 210/9 Tall Black Mic Stand with Boom
CABLING	1 x Stereo MiniJack to XLR

We provide an audio system of good, even coverage sufficiently powerful to satisfy most productions. If you feel that you have specific requirements regarding the sound system, please be in touch with our head of sound at: sound@gildedballoon.co.uk

Please Note: Prior to your arrival, a professional audio engineer tunes the audio rig in each venue. This system cannot be refocused or amended in any way.

Radio Microphones

Gilded Balloon does not provide radio microphones. You are welcome to supply your own, providing you have the appropriate licenses.

We recommend the use of our supplier to hire any additional equipment. If the hire is arranged before the deadline (usually in mid-July – the Production Team will advise you on this closer to the time) it may be sent with our main hire, saving you transportation costs.

We will not hire company specials on your behalf. We can assist in sourcing extra kit, however it is up to you to finalise the hire with our supplier and arrange payment.

You may source extras from elsewhere, but all electrical equipment must be PAT tested (in the last 12 months) . Paperwork to prove this will be required. We reserve the right to refuse the use of any equipment, which is deemed unsafe.

- In the United Kingdom, there are two legal mix frequencies for Radio Microphones; 38 and 70
- If your radio microphone does not fall into one of these two channels, you will not be allowed to use it
- If your radio microphone is on channel 38, you will be required to provide a copy of your license prior to use.

If you need to purchase a radio microphone licence for the duration of the festival please contact the Head of Sound at sound@gildedballoon.co.uk who will be able to help you through the process.

Sound Insulation & Sound Bleed

This space is adjacent to three other spaces (Balcony, Billiard Room & Nightclub). As a result we monitor sound levels and may require limitation to the volume of a show if necessary.

Gilded Balloon is surrounded by other venues, which all run programming concurrently to our own. We work with all of the venues in and around Bristo Square to limit the amount of sound bleed.

We encourage any production having issues with sound bleed to get in touch immediately.

The above information is subject to change - for the most current plans and specifications, to discuss company needs, radio microphones or for any other Sound related queries please get in touch with the Head of Sound: sound@gildedballoon.co.uk

PROJECTION

There is a projector available for use in the Sportsmans, mounted to the ceiling, however there is no screen available. If you require a projector you will need to source the screen yourself. If you wish to share this with other companies, please contact production.

Equipment

PROJECTOR	::	::	::	Panasonic PT-VW430EA 4300 lm widescreen (WXGA)
-----------	----	----	----	---------------------------------------------------

Please note that there is a **£5 recharge** per show for use of the projector to cover any maintenance fees. If you have any questions please contact production at production@gildedballoon.co.uk

This projector cannot be re-focused in any way.

DRESSING ROOM & STORAGE

- There is no dressing room for this space
- The only storage area is under the raked seating bank - It is not possible to provide storage space in other parts of the building
- This is accessed from the lobby of the venue, through a set of narrow doors
- All set items must easily pass through a standard door.

ACCESS

THE SPORTSMANS is located at:	Teviot Row House is vehicle accessible via Charles Street Lane via Crichton Street
Gilded Balloon Teviot Row House 13 Bristo Square Edinburgh EH8 9AJ	Entry for loading is from the rear lane through a standard width door There is no parking at Teviot Row House

♿ ACCESSIBILITY

Wheelchair Access, Lift Access, 2 Wheelchair Spaces, Accessible Facilities, Accessible Toilets

There is not currently level access via the main doors of Teviot due to nearby construction works, however there is an accessible lift via the Garden entrance. Lifts are available to most floors and there is a variety of seating throughout the venue.

Please note the stage is not wheelchair accessible, there is a 300mm step onto the stage.

STAFF

- One technician is assigned to the venue. They will oversee all technical rehearsals and turnarounds.
- It is your responsibility to provide sufficient staff to help with your turnaround.
- If you require a GB technician to operate lighting and/or sound a charge will be levied (see below).
- Companies are welcome to bring their own technicians, but you must ensure that person is suitably technically competent to operate the venue equipment.
- GB technicians are happy to assist during the technical rehearsals, but should additional assistance be required once the run has begun, show call rates will be charged.

<p>Full Show Rate: GB Technician operates Sound/LX or carries out Stage Management Duties/is required to stay for the duration of the show</p> <p>£20 per performance per technician + VAT</p>	<p>Lights up/down rate: Set show lighting state/mic & mic stand etc. The venue technician may leave the space during the show if deemed appropriate.</p> <p>£15.00 per performance per technician + VAT</p>
-----------------------------------------------------------------------------------------------------------------------------------------------------------------------------------------------------------	----------------------------------------------------------------------------------------------------------------------------------------------------------------------------------------------------------------------------

SECURITY

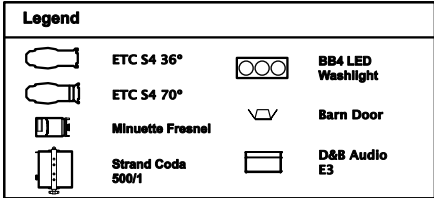
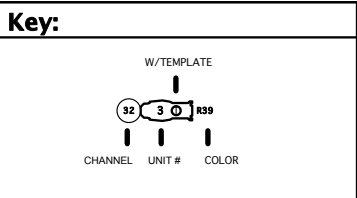
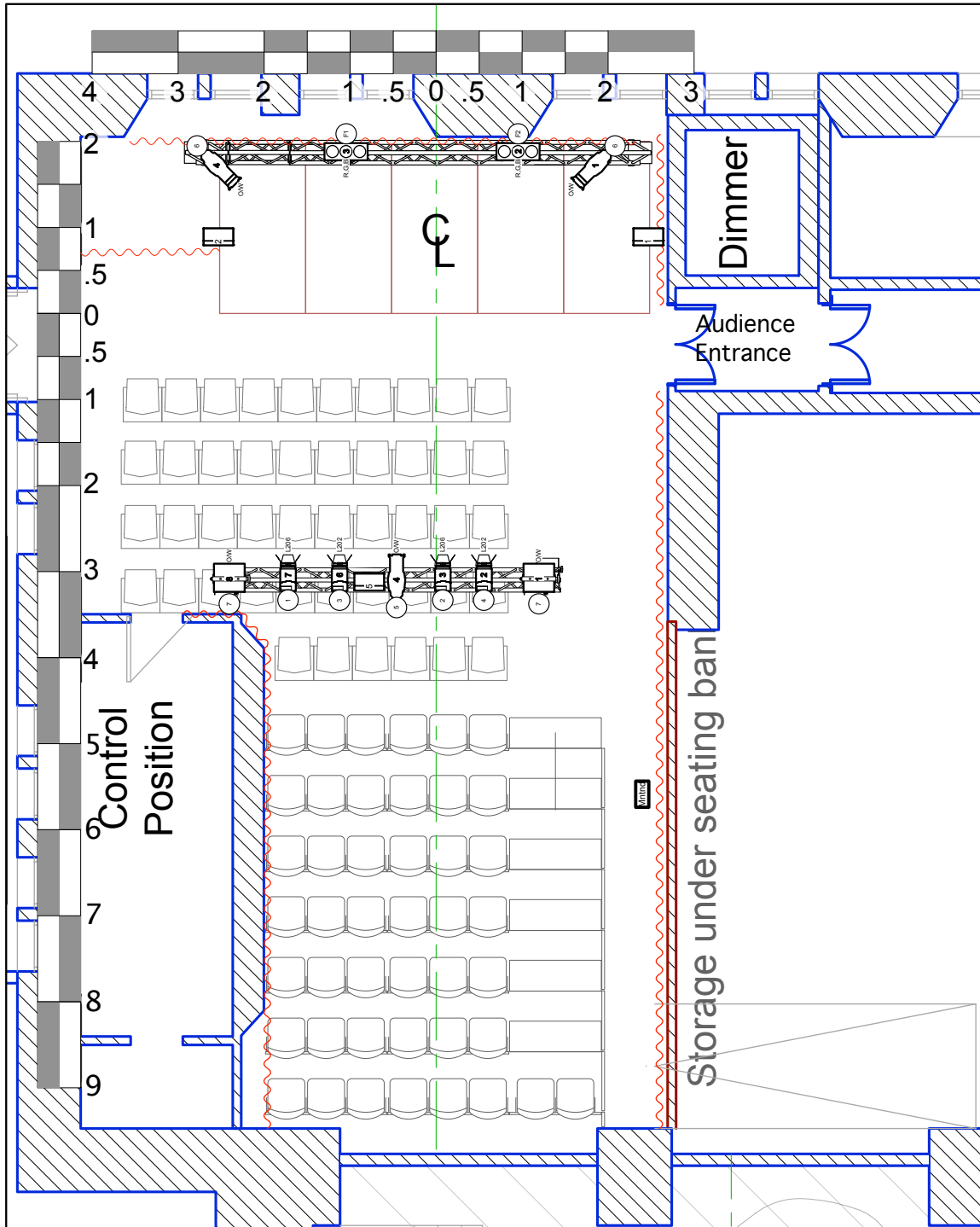
Please remember that this is a festival environment. We cannot accept any responsibility for any items lost or stolen within the building. We work hard to ensure the venues are safe and recommend the following:

- That you do not leave any valuable personal items in the venue
- That you take any valuable items away with you every day
- That electronics should not be left in the venue, unless they are wired into our system for your production

IMPORTANT INFORMATION

- There are no wardrobe or laundry facilities at Gilded Balloon
- Additional staff or items of equipment, which we are requested to provide will be charged to the company
- You will be assigned technical time prior to your first performance. This is the time for you to load your set and props into the venue and to re-tech your show. This time is also for the venue technician to learn the requirements of your production. Please note, we are unable to facilitate dress rehearsals.
- You will need to allow sufficient time to plan your changeover and organise set storage.
- Please note that your changeover time is shared with the shows before and after your own and includes the time it takes for your audience to be seated before, and clear after the show.
- All use of naked flames, smoke, haze, strobe, laser or pyrotechnic effects must be cleared with management. Smoking is not permitted in any venues, on or offstage.
- Risk assessments must be completed by all companies even if there are no perceived risks – these go on file for the duration of the festival and are a legal requirement.
- At the end of the festival, please arrange for removal or disposal of your set and any unused publicity material. Companies, who do not comply, will be charged for the cost of disposal. The base charge for disposal is £200.00 but may be increased.
- Please note, all GB venues are temporary performance spaces; all measurements and quantities quoted in the above specification are approximate and may be subject to change.

For the most current plans and specifications or to discuss any other queries please get in touch with the production team: production@gildedballoon.co.uk



90 Seats in Venue

Artistic Director:
KAREN KOREN
Production Manager:
SIOBHAN BRIGGS
Production Coordinator:
MEREDITH REHBURG
Head of Lighting:
DANIEL CUNNINGHAM
Head of Sound:
EANNA WHELAN

THE SPORTSMAN'S 2017

Drawing By: MR
Date: MAY 2017
Drawing No. **1**
Scale: 1:75
Drawing Name: GB [TEVIOT]
1 of 1



The Edinburgh Festival
fringe