



THE DINING ROOM



SEATING

- The Dining Room has a raked seating bank with one row of chairs on the floor at the front.
- The total capacity of the Dining Room is **120**

STAGE

- The performance area is approximately **6m wide by 4.5m deep** and is covered by black dance floor
- The stage is flat at floor level. The space is a black box and has no wings or backstage space
- There is a 1.2m fire lane across the front of the stage which, for fire regulations must be kept clear

MASKING

- Black box space with no backstage space or crossover
- There is just enough space for a single person to stand USR or USL and enter through the masking

SUSPENSION

- All suspension is from a freestanding truss structure with a trim height of **3710mm**
- There is an overhead truss span as drawn on the plan which is suitable for hanging items of set (which must be rigged and de-rigged daily)
- There are no flying facilities.
- All hanging scenery must be approved and is at the discretion of the Production Team

LIGHTING

- The control position for lighting and sound is at the rear of the room, house left above the staircase - It is possible for one person to operate both

Equipment		
CONTROL	ETC Ion	
DIMMING	24 x 13Amp	(8 unused in standard rig)
Max power supply loading	14kW	

- A good general cover of warm (L206) and cold (L202) light is provided over the performance area. This is split into 6 areas, DSL, DSC, DSR, USL, USC & USR
- A centre stage spot is provided which is focused with a semi-hard edge to provide light for a single performer
- A soft focused breakup gobo cover is also provided from two profiles at the rear corners of the stage

Moving Lights

- The rig also features 6 moving lights to make it as versatile as possible
- There are 2 Martin Mac 700 Profiles which are rigged DSL/DSR and 4 Martin Mac Aura Washlights which are rigged at the rear of the stage and SL/SR.

This general cover cannot be refocused or recoloured in any way

- Additional lanterns can be rigged as company specials, but due to rigging and power considerations these must be approved for use before arrival.
- Cabling for any extras must be provided to reach the dimmers or stage boxes (please get in touch to discuss prior to arrival).
- All dimming channels run on 15A round pin connectors. The standard rig uses 16 of the available 18 channels.
- Blackout is acceptable, ‘full’ blackout is not possible due to emergency lighting regulations.

We recommend the use of our supplier to hire any additional equipment. If the hire is arranged before the deadline (usually in mid-July – the Production Team will advise you on this closer to the time) it may be sent with our main hire, saving you transportation costs.

We will not hire company specials on your behalf. We can assist in sourcing extra kit, however it is up to you to finalise the hire with our supplier and arrange payment.

You may source extras from elsewhere, but all electrical equipment must be PAT tested (in the last 12 months). Paperwork to prove this will be required. We reserve the right to refuse the use of any equipment, which is deemed unsafe.

The above information is subject to change - for the most current plans and specifications, to discuss company specials or for any other Lighting related queries please get in touch with the Head of Lighting: lighting@gildedballoon.co.uk

SOUND

- The control position for both lighting and sound is located in a balcony box at the rear of the room
- The control position for lighting and sound is at the rear of the room, house left above the staircase - It is possible for one person to operate both

Equipment	
CONTROL	Yamaha LS9-16 Mixing Console

AMPLIFICATION	1 x d&b Audiotechnik D6 Stereo Amplifier 1 x d&b Audiotechnik EPAC-2 MONO Amplifier 1 x LAB Gruppen 1200c 4 ch 380w Amplifier 2 x d&b Audiotechnik E8 Loudspeaker 2 x d&b Audiotechnik E0 Loudspeaker 1 x d&b C7 Sub Bass Speaker 3 x L-Accoustic MTD108a Loudspeaker
PLAYBACK	1 x Tascam CD-500b Pro CD Player 1 x Tascam HD-R1 Solid State Recorder
MICROPHONES & STANDS	4 x MTR3 DI Box 1 x Orbital PC DI Box 2 x Countryman 85 Active DI Box 5 x Sure SM58 Dynamic Cardioid Microphone 4 x K+M 210/9 Tall Black Mic Stand with Boom 1 x Ultimate Live-St Freedom One Handed Mic Stand
CABLING	1 x Stereo MiniJack to XLR

We provide an audio system of good, even coverage sufficiently powerful to satisfy most productions. If you feel that you have specific requirements regarding the sound system, please be in touch with our head of sound at: sound@gildedballoon.co.uk

Please Note: Prior to your arrival, a professional audio engineer tunes the audio rig in each venue. This system cannot be refocused or amended in any way.

Radio Microphones

Gilded Balloon does not provide radio microphones. You are welcome to supply your own, providing you have the appropriate licenses.

We recommend the use of our supplier to hire any additional equipment. If the hire is arranged before the deadline (usually in mid-July – the Production Team will advise you on this closer to the time) it may be sent with our main hire, saving you transportation costs.

We will not hire company specials on your behalf. We can assist in sourcing extra kit, however it is up to you to finalise the hire with our supplier and arrange payment.

You may source extras from elsewhere, but all electrical equipment must be PAT tested (in the last 12 months). Paperwork to prove this will be required. We reserve the right to refuse the use of any equipment, which is deemed unsafe.

- In the United Kingdom, there are two legal mix frequencies for Radio Microphones; 38 and 70
- If your radio microphone does not fall into one of these two channels, you will not be allowed to use it
- If your radio microphone is on channel 38, you will be required to provide a copy of your license prior to use.

If you need to purchase a radio microphone licence for the duration of the festival please contact the Head of Sound at sound@gildedballoon.co.uk who will be able to help you through the process.

Sound Insulation & Sound Bleed

This space is not immediately adjacent to any other venues; however we will monitor sound levels and may require limitation to the volume of a show if necessary.

Gilded Balloon is surrounded by other venues, which all run programming concurrently to our own. We work with all of the venues in and around Bristo Square to limit the amount of sound bleed.

We encourage any production having issues with sound bleed to get in touch immediately.

The above information is subject to change - for the most current plans and specifications, to discuss company needs, radio microphones or for any other Sound related queries please get in touch with the Head of Sound: sound@gildedballoon.co.uk

PROJECTION

- Projection is possible in this venue – please contact the Production team for more information

DRESSING ROOM & STORAGE

- There is a dressing/storage area in an adjacent room to the rear of the seating bank
- This room is also used for scenic & prop storage
- The dressing room is shared with all other shows performing in the Dining Room.
- It is not possible to provide storage space in other parts of the building
- All set items must easily pass through a standard door.

ACCESS

THE DINING ROOM is located at:

Gilded Balloon
Teviot Row House
13 Bristo Square
Edinburgh
EH8 9AJ

Teviot Row House is vehicle accessible via Charles Street Lane via Crichton Street

Entry for loading is from the rear lane, through 4 sets of standard width doors and up a set of stairs

There is no parking at Teviot Row House

STAFF

- One technician is assigned to the venue. They will oversee all technical rehearsals and turnarounds.
- It is your responsibility to provide sufficient staff to help with your turnaround.
- If you require a GB technician to operate lighting and/or sound a charge will be levied (see below).
- Companies are welcome to bring their own technicians, but you must ensure that person is suitably technically competent to operate the venue equipment.
- GB technicians are happy to assist during the technical rehearsals, but should additional assistance be required once the run has begun, show call rates will be charged.

Full Show Rate:

GB Technician operates Sound/LX or carries out Stage Management Duties/is required to stay for the duration of the show

£20 per performance per technician + VAT

Lights up/down rate:

Set show lighting state/mic & mic stand etc.

£15.00 per performance per technician + VAT

SECURITY

Please remember that this is a festival environment. We cannot accept any responsibility for any items lost or stolen within the building. We work hard to ensure the venues are safe and recommend the following:

- That you do not leave any valuable personal items in the venue
- That you take any valuable items away with you every day
- That electronics should not be left in the venue, unless they are wired into our system for your production

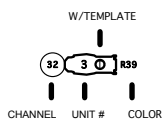
IMPORTANT INFORMATION

- There are no wardrobe or laundry facilities at Gilded Balloon

- Additional staff or items of equipment, which we are requested to provide will be charged to the company
- You will be assigned technical time prior to your first performance. This is the time for you to load your set and props into the venue and to re-tech your show. This time is also for the venue technician to learn the requirements of your production. Please note, we are unable to facilitate dress rehearsals.
- You will need to allow sufficient time to plan your changeover and organise set storage.
- Please note that your changeover time is shared with the shows before and after your own and includes the time it takes for your audience to be seated before, and clear after the show.
- All use of naked flames, smoke, haze, strobe, laser or pyrotechnic effects must be cleared with management. Smoking is not permitted in any venues, on or offstage.
- Risk assessments must be completed by all companies even if there are no perceived risks – these go on file for the duration of the festival and are a legal requirement.
- At the end of the festival, please arrange for removal or disposal of your set and any unused publicity material. Companies, who do not comply, will be charged for the cost of disposal. The base charge for disposal is £200.00 but may be increased.
- Please note, all GB venues are temporary performance spaces; all measurements and quantities quoted in the above specification are approximate and may be subject to change.

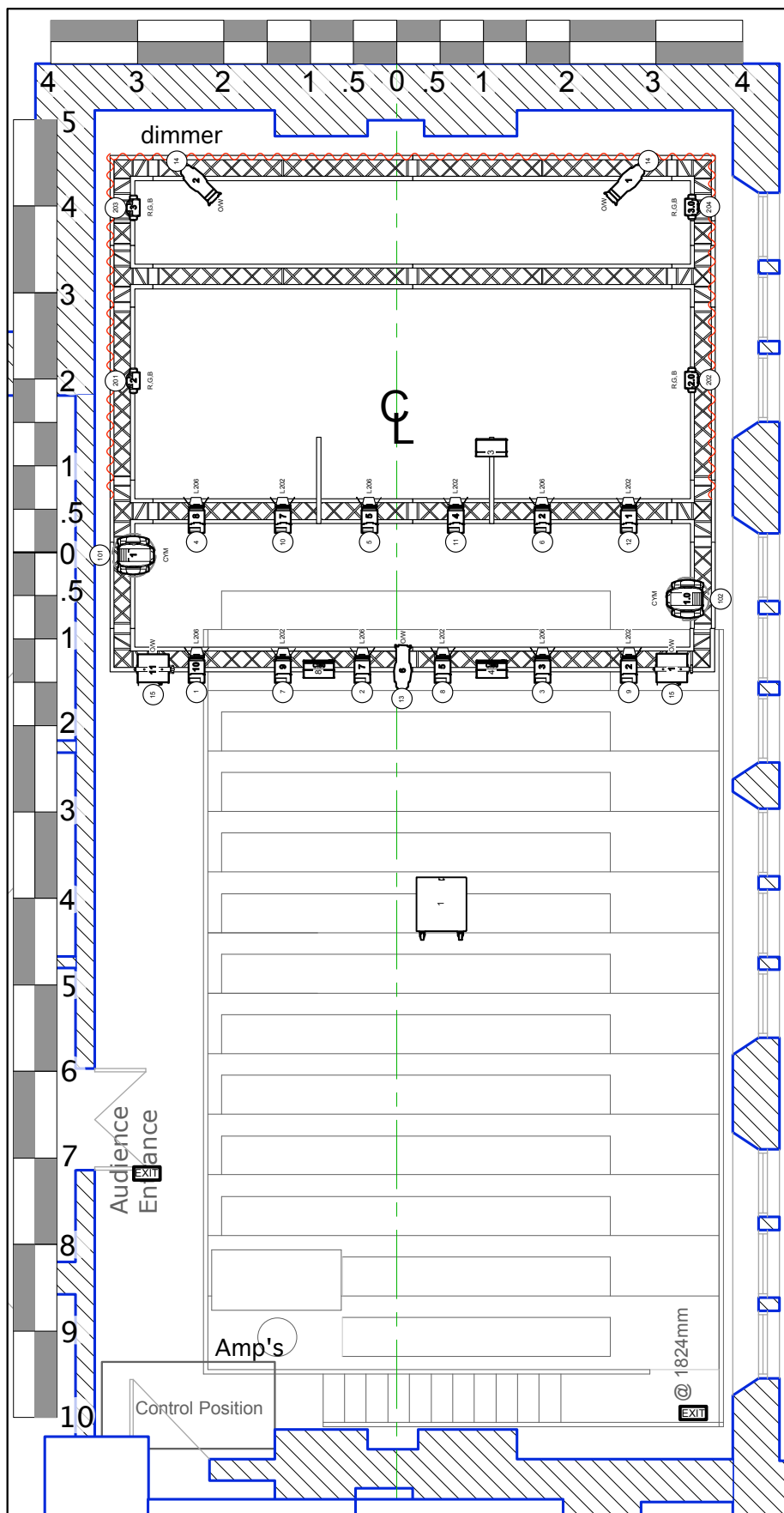
For the most current plans and specifications or to discuss any other queries please get in touch with the production team: production@gildedballoon.co.uk

Key:



Legend

- ETC S4 38°
- ETC S4 70°
- Minuetta Fresnel
- Strand Coda 500/1
- MAC 700
- VaryLED A7
- Barn Door
- Template Holder
- E6
- C180
- C7 Sub



120 Seats in Venue

AVISSE Director:
 KAREN KOREN
 Production Manager:
 SIOBHAN BRIGGS
 Production Coordinator:
 MEREDITH REHBLURG
 Head of Lighting:
 DANIEL CUNNINGHAM
 Head of Sound:
 EANNA WHELAN

The Dining Room

2016

Drawing By: EB
 Date: MAY 2016
 Scale: 1:75
 Drawing Name: GB [TEVIOT]

Drawing No. **1**
 of 1



THE EDINBURGH FESTIVAL FRINGE 2016

GILDED BALLOON VENUE SCHEDULE
Page 1 of 3



GILDED BALLOON [Teviot].lw5
MAY 2016

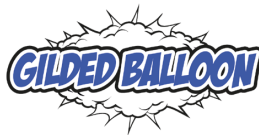
TEVIOT ROW HOUSE
13 BRISTO SQUARE, EDINBURGH, EH89AJ
REV 3 : 2016 FRINGE : MAY 2016

ARTISTIC DIRECTOR: KAREN KOREN
PRODUCTION MANAGER: SIOBHAN BRIGGS
PRODUCTION@GILDEDBALLOON.CO.UK

Position	Unit#	Chan	DMX	Purpose	Inst Type	Watt	Access	Color	Gobo
Dining Room									
Dining Room Truss 1	1	(15)	15	House Lights	Strand Coda 500/1	500w		O/W	
"	2	(9)	9	Cool Front Fill	Strand Quartet Fresnel	2kw	Quartet Barn Door	L202	
"	3	(3)	3	Warm Front Fill	"	"	"	L206	
"	4			Sound	D&B Audiotechnik Ci80	8w		N/A	
"	5	(8)	8	Cool Front Fill	Strand Quartet Fresnel	2kw	Quartet Barn Door	L202	
"	6	(13)	13	Front Spot	S4-36	575w		O/W	
"	7	(2)	2	Warm Front Fill	Strand Quartet Fresnel	2kw	Quartet Barn Door	L206	
"	8			Sound	D&B Audiotechnik Ci80	8w		N/A	
"	9	(7)	7	Cool Front Fill	Strand Quartet Fresnel	2kw	Quartet Barn Door	L202	
"	10	(1)	1	Warm Front Fill	"	"	"	L206	
"	11	(15)	15	House Lights	Strand Coda 500/1	500w		O/W	
Dining Room Truss 2	1	(12)	12	Cool Front Fill	Strand Quartet Fresnel	2kw	Quartet Barn Door	L202	
"	2	(6)	6	Warm Front Fill	"	"	"	L206	
"	3			Sound	D&B Audiotechnik E3	10w		N/A	

THE EDINBURGH FESTIVAL FRINGE 2016

GILDED BALLOON VENUE SCHEDULE
Page 2 of 3



GILDED BALLOON [Teviot].lw5
MAY 2016

Position	Unit#	Chan	DMX	Purpose	Inst Type	Watt	Access	Color	Gobo
Dining Room									
Dining Room Truss 2	4	(11)	11	Cool Front Fill	Strand Quartet Fresnel	2kw	Quartet Barn Door	L202	
"	"			Sound	D&B Audiotechnik Ci80	8w		N/A	
"	5	(5)	5	Warm Front Fill	Strand Quartet Fresnel	2kw	Quartet Barn Door	L206	
"	6			Sound	D&B Audiotechnik E3	10w		N/A	
"	7	(10)	10	Cool Front Fill	Strand Quartet Fresnel	2kw	Quartet Barn Door	L202	
"	8	(4)	4	Warm Front Fill	"	"	"	L206	
"	"			Sound	D&B Audiotechnik Ci80	8w		N/A	
Dining Room Truss 4	1	(14)	14	3/4 Bax Temp Wash	S4-70	575w		O/W	77805
"	2	"	"	"	"	"		"	"
Dining Room SL Truss	1.0	(102)	56	Moving Light	MAC 700 Profile	1.2kw		CYM	
"	2.0	(202)	119	"	VaryLED A7 Zoom	236w		R, G, B	
"	3.0	(204)	183	"	"	"		"	
Dining Room SR Truss	1.0	(101)	25	"	MAC 700 Profile	1.2kw		CYM	
"	2.0	(201)	87	"	VaryLED A7 Zoom	236w		R, G, B	
"	3.0	(203)	151	"	"	"		"	
Dining Room Seating Risers				Temp. Emergency Exit Fitting	Maintained Bulkhead Fitting	12w		N/A	
"				"	"	"		"	

THE EDINBURGH FESTIVAL FRINGE 2016

GILDED BALLOON VENUE SCHEDULE
Page 3 of 3



GILDED BALLOON [Teviot].lw5
MAY 2016

Position	Unit#	Chan	DMX	Purpose	Inst Type	Watt	Access	Color	Gobo
Dining Room									
Dining Room Under Seating	1			Sound	D&B Audiotechnik C7 Sub	49w		N/A	

