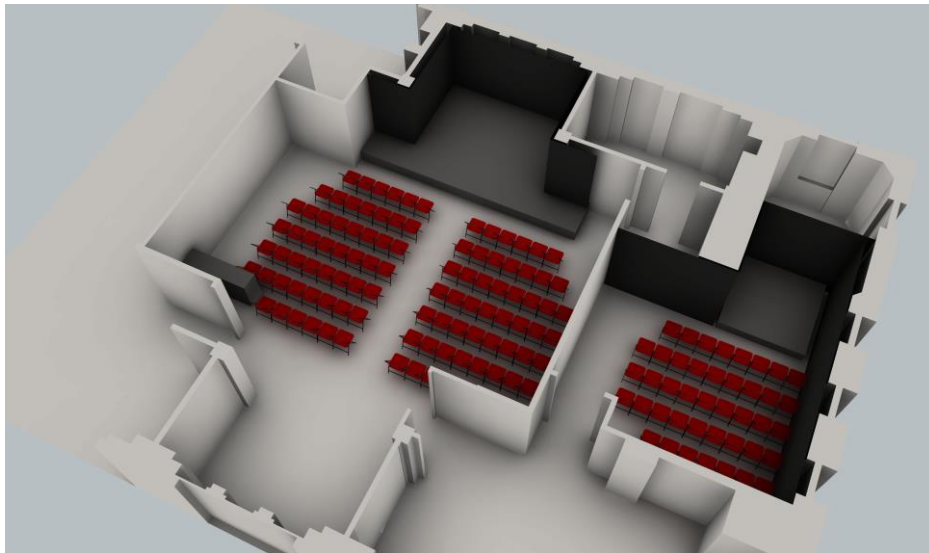


# GILDED BALLOON

## ROSE THEATRE

### TECHNICAL SPECIFICATIONS



EDINBURGH FRINGE FESTIVAL

DRAFT v3-1

204 Rose Street,  
Edinburgh,  
EH2 4AZ

### Introduction

The Rose Attic 1 offers a boutique theatrical performance space for the festival with a performance space in end-on format.

### Capacity

Attic 1 - 101 folding seats

### Performing Area:

Attic 1 - 5800x1000mm forestage, 3500x2000mm main stage with black box masking.

### Storage

There is limited storage space on the 3rd floor.

Attic 1 can have some space upstage if the stage depth is reduced or shelves / box storage to the side of the auditorium and in the dressing room area.

### Dressing Rooms

Attic 1 has an adjacent dressing room access via the auditorium.

### Stage Management

No comms or cue lights currently.

### Control Position

There is a fixed control position front of house in Attic 1.

### Bar

Dedicated bar area at the rear of Attic 1

### Toilets

Male and Female Toilets serving both spaces.

## ATTIC 1

### Audio

Mixing - Yamaha MG16FX Analogue Mixer with Effects

Qlab Mac with Stereo DI playback

4x Meyer UPM Speakers

3x SM58 Microphones

3x Boom Stands

4x DI Boxes

### Lighting

3x COB 4 cell LED Pixel (backlight)

6x Warm White LED Fresnel c/w Barndoors

4x RGBW LED Fresnel c/w Barndoors

3x LED Profile WW

LED Starcloth to rear of stage

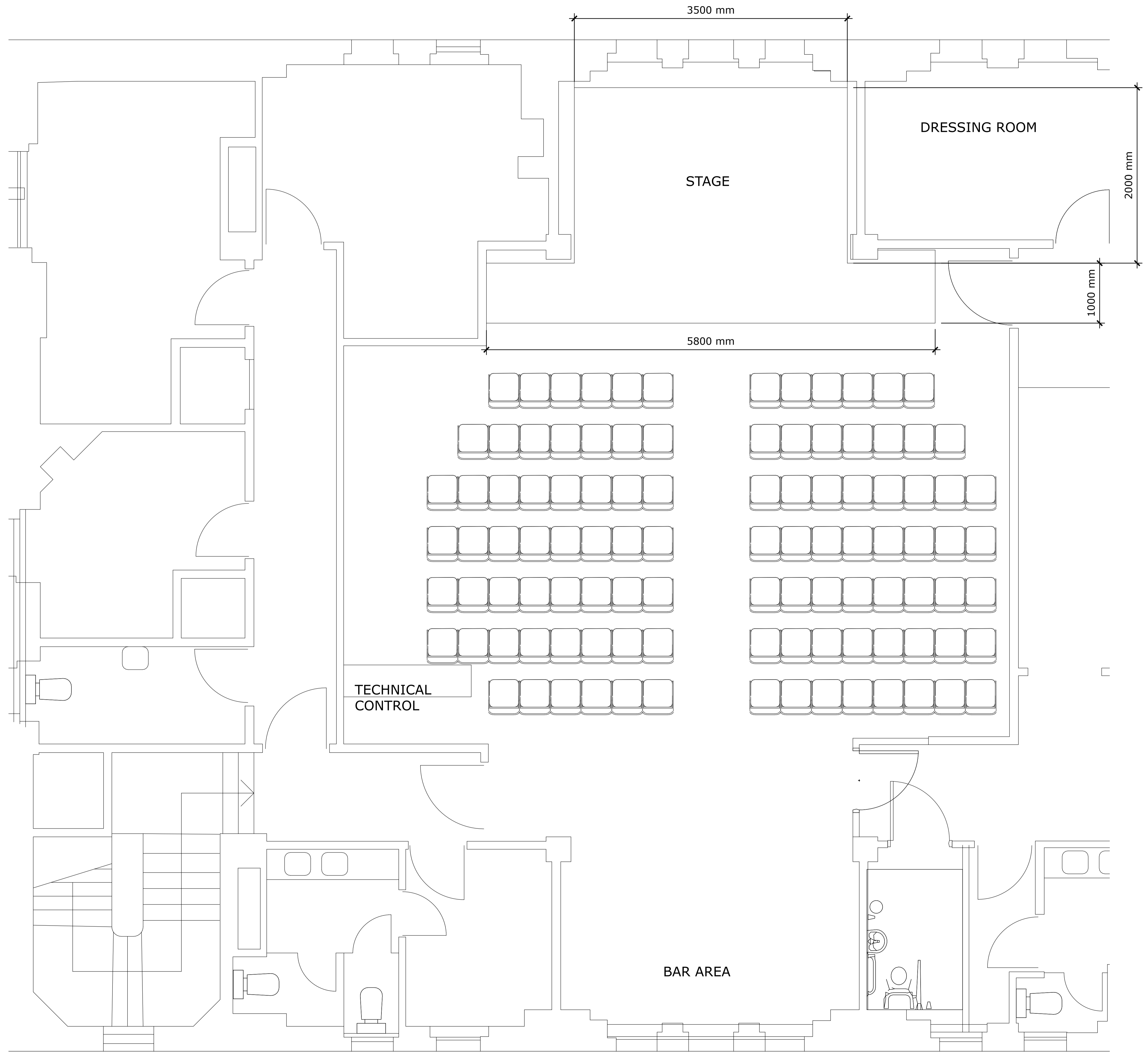
Dimmable House Lighting

Control - Jands Stage CL or equivalent

Power distribution

### Video

On request.

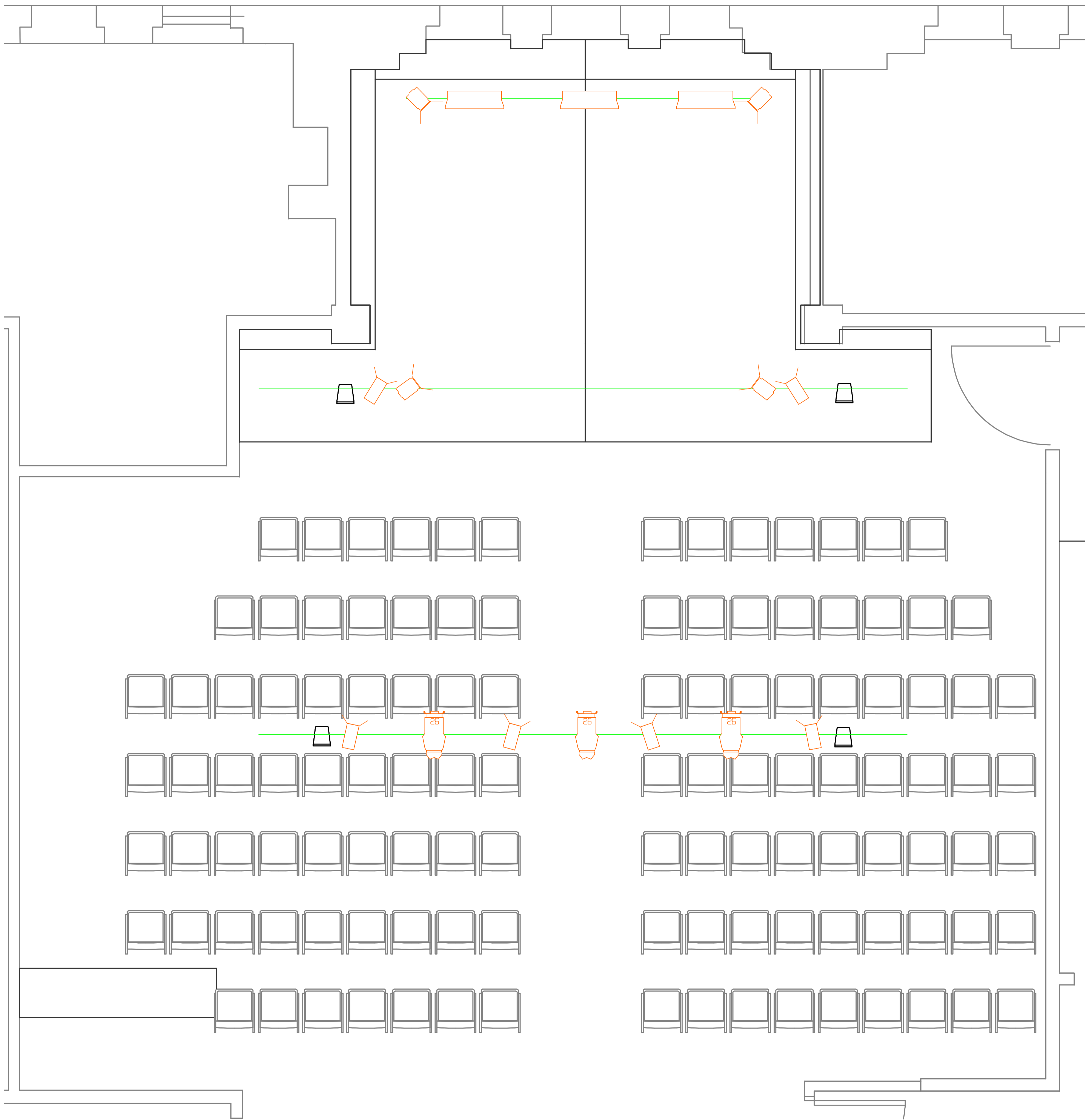


Project: The Rose Theatre  
Drawing Date: 02/03/17  
Drawn by: BMR  
Version: v3-1

The Rose Theatre  
Attic 1

# GILDED BALLOON

## ROSE THEATRE



Symbol	Name	Count
	M60 WW LED Fresnel	6
	MP75 RGBW Fresnel	4
	COB Matrix Blinder	3
	LED Profile Spot	3

Project: The Rose Theatre  
 Drawing Date: 02/03/17  
 Drawn by: BMR  
 Version: v3-1

The Rose Theatre  
 Attic 1