

# **GILDED BALLOON**

## ROSE THEATRE

### TECHNICAL SPECIFICATIONS

EDINBURGH FRINGE FESTIVAL

DRAFT v3-1

204 Rose Street,  
Edinburgh,  
EH2 4AZ.

## Introduction

The Rose Basement Theatre is a self-contained and flexible space for theatre, music, dance, cabaret and performance. It has its own bar facility and toilets and dedicated street level entrance. There is airflow and heating as well as acoustic treatment to the walls.

The main floor is timber plans construction making it suitable for all performance types.

The seating and layout are flexible but we have a standard end-on format for the festival.

There is a small box office area and foyer outside the entrance to the studio.

## **Capacity:**

End on - 114 seats + technical control

## **Performing Area:**

End on:

Performing area 6000mm x 2000mm front area 4200x2800mm rear area without crossover.

If crossover is used then stage depth is reduced by 1000mm.

Height to lighting grid from floor 2100mm

## **Storage**

There is very limited storage in the studio in the form of several cupboards in the wall suitable for small props only. In End on format the back masking can be moved downstage to create a storage area but this will further restrict the performing area.

## **Dressing Rooms**

The studio has one unisex dressing room 4000x3000mm. There are power sockets, counter and chairs.

Show relay, with tannoy, camera to dressing room.

## **Stage Management**

3 Tecpro Wired Comms - 1 fixed at the technical control position and the others accessible from stage left and right. No cuelight system.

## Audio

Mixing - Allen&Heath Qu16 Digital Mixer with Effects and Digital Stage Box

Qlab 3 Audio Playback Mac Mini in rack with HD display

2 x Meyer UPA-1P

2x Meyer UPM (delay)

2x BSS AR133 Mono Instrument DI Boxes

1x PC DI Box (Stereo)

3x SM58 Microphones

2x SM57 Microphones

5x Boom Microphone Stands

## Lighting

We use LED based fixtures and carry a flexible theatrical inventory of Fresnels, Profiles and Floods.

Festival Rig inventory:

4x eLumen8 COB Tri4 LED Batten (60 degree wash RGB Chip)

6x eLumen8 MP60 Warm White 60w LED Fresnel c/w Barndoors

10x eLumen8 MP75 RGBW LED Fresnel c/w Barndoors

4x LED Profile Zoom

LED Starcloth (Tri Pixels) to rear of stage

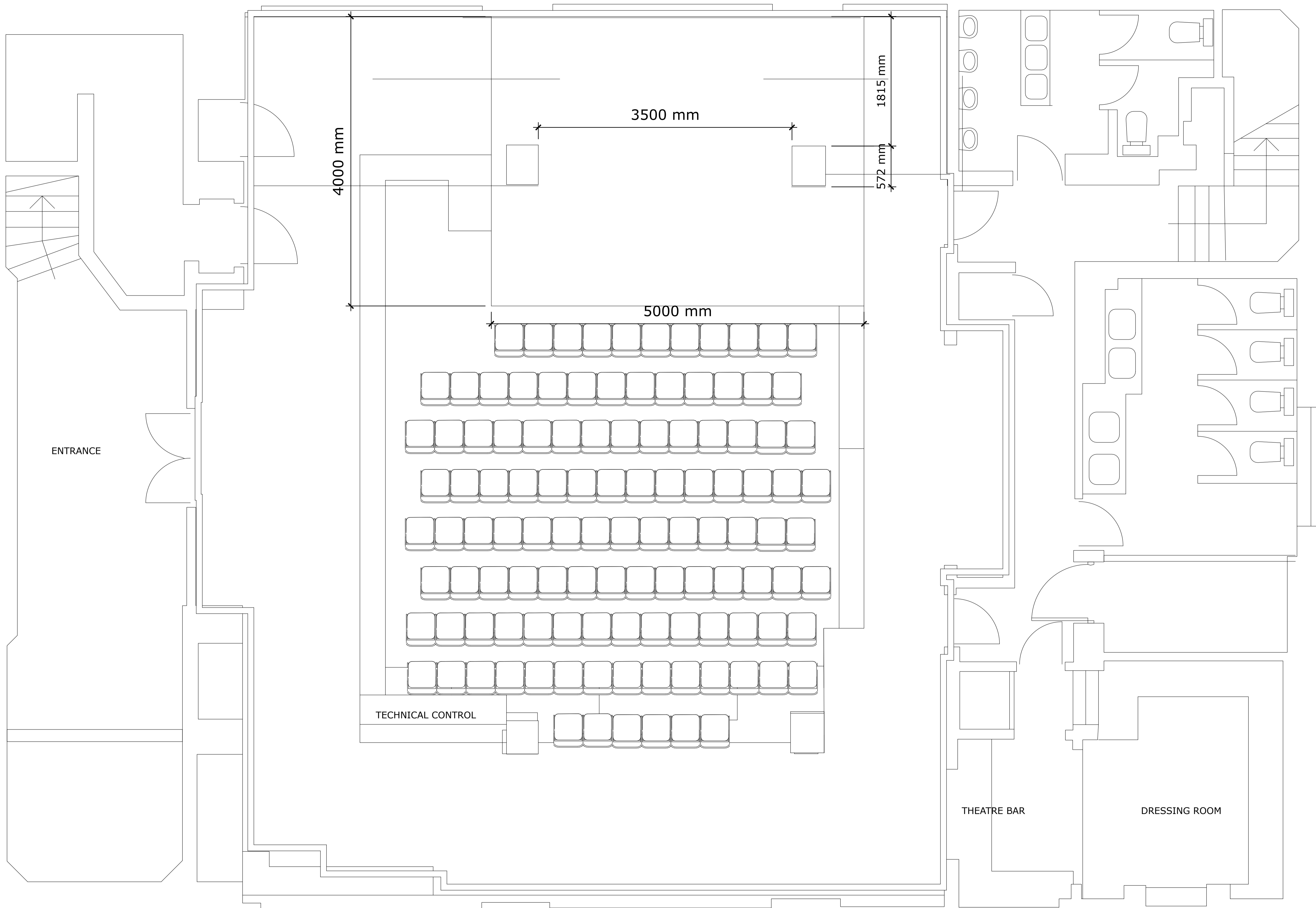
Dimmable House Lighting on lighting console

Control - ETC ColourSource 40

DMX and Power distribution as required (single universe)

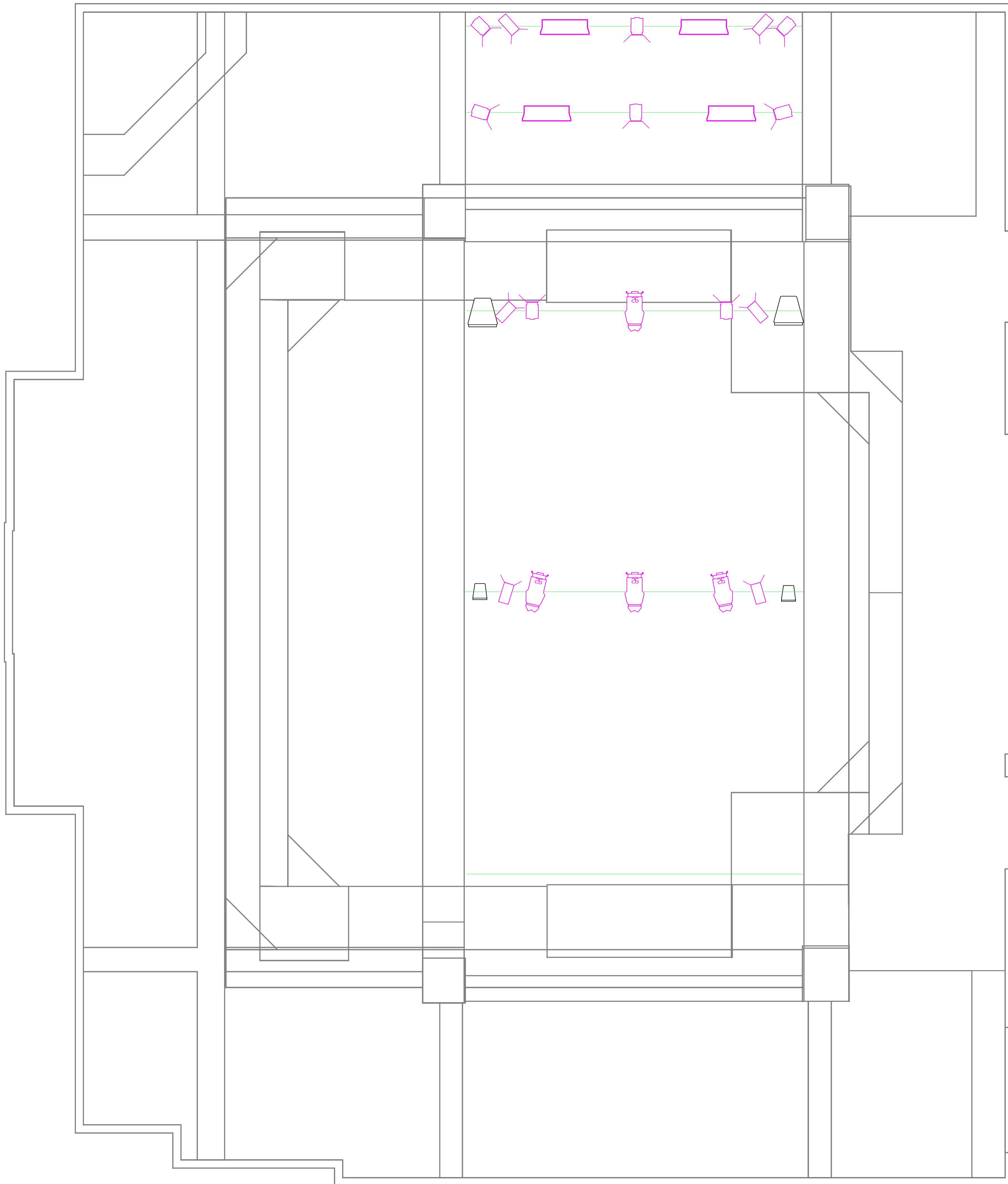
## Video





Non supplied.



# GILDED BALLOON

## ROSE THEATRE



Symbol	Name	Count
	COB Matrix 4 Cell	4
	LED Profile Spot	4
	M60 WW Fresnel LED	6
	MP75 RGBW LED Fresnel	8

Project: The Rose Theatre  
 Drawing Date:  
 Drawn by: BMR  
 Version: v

The Rose Theatre