



THE NIGHTCLUB



SEATING

- The Night Club has 10 rows of seating on the floor followed by 3 rows on a small platform at the back of the room
- There are benches built into the venue along the walls, which provide additional seating
- There is seating for 38 on the balcony level
- The total capacity is 150 seated –OR– 250 standing.

STAGE

- The performance area is approximately 4m wide by 3m deep and is covered by black dance floor.
- The stage is raised 500mm above floor level
- There is limited backstage space in the stage right wing
- This space is also used for storage
- There is no crossover
- There is a column at the DSL and the DSR corner of the stage

MASKING

- This is a proscenium stage with SR split and SL steps to the ground level for entrances.
- Limited SR wing space.

- No crossover possible

SUSPENSION

- The Front of house bars are attached to the ceiling 4500mm and 4900mm respectively from the floor
- The side and rear bar is hung 4500mm from the floor
- There are no overhead bars above the stage
- There are no flying facilities.
- All hanging scenery must be approved and is at the discretion of the Production Team

LIGHTING

- The control position for both lighting and sound is located upstairs at the rear of the room at the top of the staircase - It is possible for one person to operate both

Equipment				
CONTROL	::	::	::	Avolites Pearl Expert with Touch Wing
DIMMING	::	::	::	12 x 10Amp (5 unused in standard rig)
Max power supply loading	::			7kW

- A good general cover of warm (L206) and cold (L202) light is provided over the performance area. This is split into 2 areas, SL & SR. Due to the stage layout (and pillar) these are crossed to cover alternate sides
- A centre stage spot is provided which is focussed with a semi-hard edge to provide light for a single performer
- A soft focussed breakup gobo cover is also provided from two profiles at the rear corners of the stage
- The rig also features 6 moving lights to make it as versatile as possible
- There are 2 Martin Mac 700 Profiles which are rigged ‘front of house’ and 4 Martin Aura Washlights which are rigged 2 ‘front of house’ and 2 at the rear of the stage

This general cover cannot be refocused or recoloured in any way

- The standard rig uses 16 of the available 18 channels.
- Blackout is acceptable, ‘full’ blackout is not possible due to emergency lighting regulations.

We recommend the use of our supplier to hire any additional equipment. If the hire is arranged before the deadline (usually in mid-July – the Production Team will advise you on this closer to the time) it may be sent with our main hire, saving you transportation costs.

We will not hire company specials on your behalf. We can assist in sourcing extra kit, however it is up to you to finalise the hire with our supplier and arrange payment.

You may source extras from elsewhere, but all electrical equipment must be PAT tested (in the last 12 months). Paperwork to prove this will be required. We reserve the right to refuse the use of any equipment, which is deemed unsafe.

The above information is subject to change - for the most current plans and specifications, to discuss company specials or for any other Lighting related queries please get in touch with the Head of Lighting: lighting@gildedballoon.co.uk

SOUND

- The control position for lighting and sound is located at the rear of the venue house left
- There is only room for one operator to operate both sound and lighting

Equipment	
CONTROL	Yamaha LS9-16 Mixing Console
AMPLIFICATION	3 x d&b Audiotechnik D6 Stereo Amplifier 1 x d&b Audiotechnik LAB Gruppen 1200c 4 ch 380w Amplifier 3 x d&b Audiotechnik E6 Loudspeaker 2 x d&b Audiotechnik Q7 Loudspeaker 1 x d&b C7 Sub Bass Speaker
PLAYBACK	3 x L-Accoustic MTD108a Loudspeaker 1 x Tascam CD-500b Pro CD Player 1 x Tascam HD-R1 Solid State Recorder
MICROPHONES & STANDS	4 x MTR3 DI Box 1 x Orbital PC DI Box 4 x Sure SM58 Dynamic Cardioid Microphone 4 x K+M 210/9 Tall Black Mic Stand with Boom 1 x Ultimate Live-St Freedom One Handed Mic Stand
CABLING	1 x Stereo MiniJack to XLR

We provide an audio system of good, even coverage sufficiently powerful to satisfy most productions. If you feel that you have specific requirements regarding the sound system, please be in touch with our head of sound at: sound@gildedballoon.co.uk

Please Note: Prior to your arrival, a professional audio engineer tunes the audio rig in each venue. This system cannot be refocused or amended in any way.

Radio Microphones

Gilded Balloon does not provide radio microphones. You are welcome to supply your own, providing you have the appropriate licenses.

We recommend the use of our supplier to hire any additional equipment. If the hire is arranged before the deadline (usually in mid-July – the Production Team will advise you on this closer to the time) it may be sent with our main hire, saving you transportation costs.

We will not hire company specials on your behalf. We can assist in sourcing extra kit, however it is up to you to finalise the hire with our supplier and arrange payment.

You may source extras from elsewhere, but all electrical equipment must be PAT tested (in the last 12 months). Paperwork to prove this will be required. We reserve the right to refuse the use of any equipment, which is deemed unsafe.

- In the United Kingdom, there are two legal mix frequencies for Radio Microphones; 38 and 70
- If your radio microphone does not fall into one of these two channels, you will not be allowed to use it
- If your radio microphone is on channel 38, you will be required to provide a copy of your license prior to use.

If you need to purchase a radio microphone licence for the duration of the festival please contact the Head of Sound at sound@gildedballoon.co.uk who will be able to help you through the process.

Sound Insulation & Sound Bleed

This space is adjacent to two other spaces (Balcony & Sportmans). As a result we monitor sound levels and may require limitation to the volume of a show if necessary.

Gilded Balloon is surrounded by other venues, which all run programming concurrently to our own. We work with all of the venues in and around Bristo Square to limit the amount of sound bleed.

We encourage any production having issues with sound bleed to get in touch immediately.

The above information is subject to change - for the most current plans and specifications, to discuss company needs, radio microphones or for any other Sound related queries please get in touch with the Head of Sound: sound@gildedballoon.co.uk

PROJECTION

- Projection is possible in this venue – please contact the Production team for more information

DRESSING ROOM & STORAGE

- There is a small dressing room to the rear of the performance space and is shared with all other shows performing in the Nightclub
- This space is also used for scenic storage
- There is a small storage area SR of the stage
- All set items must easily pass through a standard door.

ACCESS

THE NIGHTCLUB is located at: Gilded Balloon
Teviot Row House
13 Bristo Square
Edinburgh
EH8 9AJ

Teviot Row House is vehicle accessible via Charles Street Lane via Crichton Street

Entry for loading is from the rear lane through a standard width door.

There is no parking at Teviot Row House

STAFF

- One technician is assigned to the venue. They will oversee all technical rehearsals and turnarounds.
- It is your responsibility to provide sufficient staff to help with your turnaround.
- If you require a GB technician to operate lighting and/or sound a charge will be levied (see below).
- Companies are welcome to bring their own technicians, but you must ensure that person is suitably technically competent to operate the venue equipment.
- GB technicians are happy to assist during the technical rehearsals, but should additional assistance be required once the run has begun, show call rates will be charged.

Full Show Rate:

GB Technician operates Sound/LX or carries out Stage Management Duties/is required to stay for the duration of the show

£20 per performance per technician + VAT

Lights up/down rate:

Set show lighting state/mic & mic stand etc.

The venue technician may leave the space during the show if deemed appropriate.

£15.00 per performance per technician + VAT

SECURITY

Please remember that this is a festival environment. We cannot accept any responsibility for any items lost or stolen within the building. We work hard to ensure the venues are safe and recommend the following:

- That you do not leave any valuable personal items in the venue
- That you take any valuable items away with you every day
- That electronics should not be left in the venue, unless they are wired into our system for your production

IMPORTANT INFORMATION

- There are no wardrobe or laundry facilities at Gilded Balloon
- Additional staff or items of equipment, which we are requested to provide will be charged to the company
- You will be assigned technical time prior to your first performance. This is the time for you to load your set and props into the venue and to re-tech your show. This time is also for the venue technician to learn the requirements of your production. Please note, we are unable to facilitate dress rehearsals.
- You will need to allow sufficient time to plan your changeover and organise set storage.
- Please note that your changeover time is shared with the shows before and after your own and includes the time it takes for your audience to be seated before, and clear after the show.
- All use of naked flames, smoke, haze, strobe, laser or pyrotechnic effects must be cleared with management. Smoking is not permitted in any venues, on or offstage.
- Risk assessments must be completed by all companies even if there are no perceived risks – these go on file for the duration of the festival and are a legal requirement.
- At the end of the festival, please arrange for removal or disposal of your set and any unused publicity material. Companies, who do not comply, will be charged for the cost of disposal. The base charge for disposal is £200.00 but may be increased.
- Please note, all GB venues are temporary performance spaces; all measurements and quantities quoted in the above specification are approximate and may be subject to change.

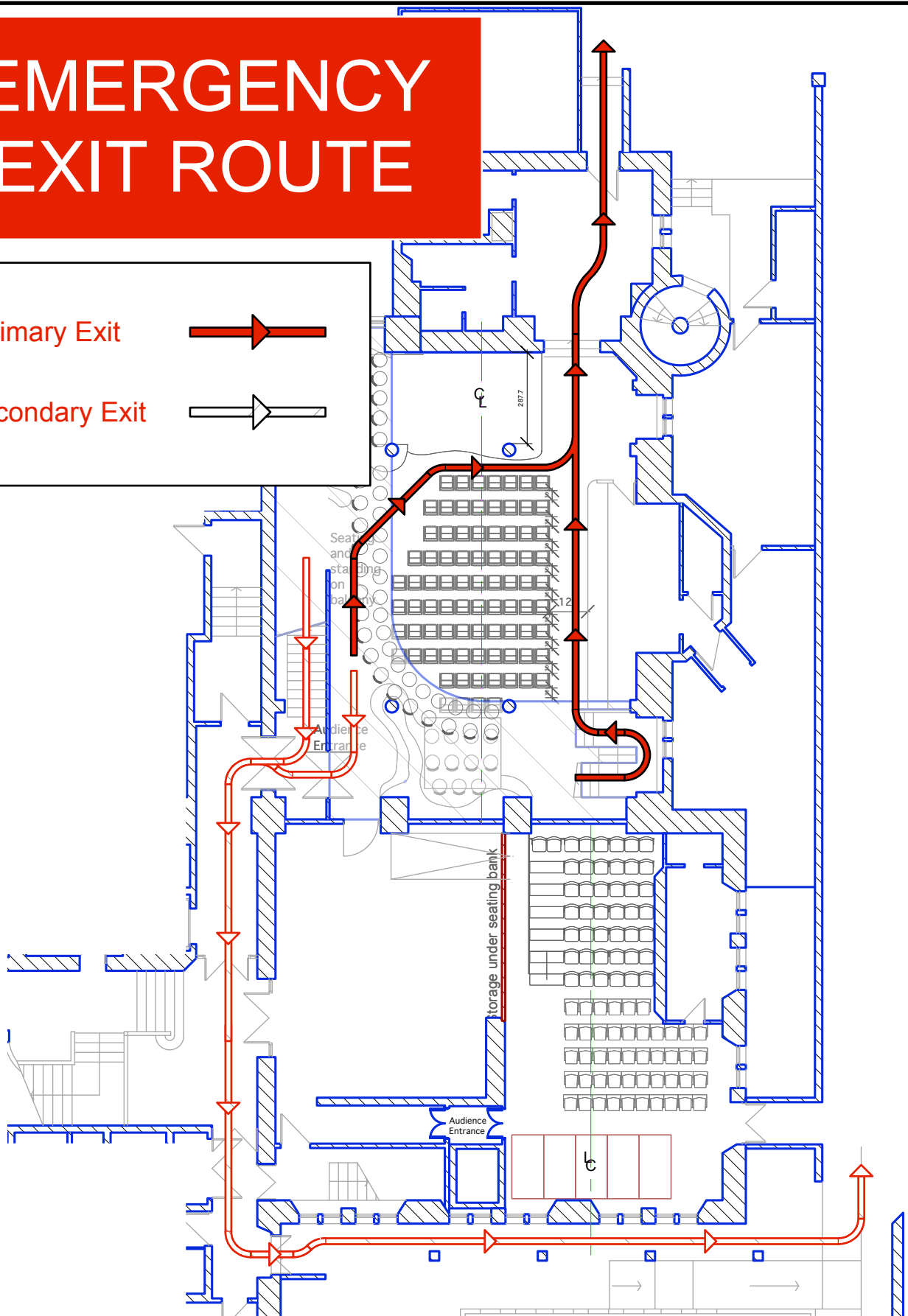
For the most current plans and specifications or to discuss any other queries please get in touch with the production team: production@gildedballoon.co.uk

EMERGENCY EXIT ROUTE

Primary Exit



Secondary Exit



Artistic Director:
KAREN KOREN
Production Manager:
SIOBHAN BRIGGS
Production Coordinator:
EMILY BILL
Head of Lighting:
DANIEL CUNNINGHAM
Head of Sound:
ÉANNA WHELAN

THE NIGHT CLUB 2016

Drawing By:
EB
Scale:
1:175
Drawing Name:
EVACUATION PLAN

Date:
MAY 2016
Drawing No.

of
1



The Edinburgh Festival
fringe

THE EDINBURGH FESTIVAL FRINGE 2016

GILDED BALLOON VENUE SCHEDULE
Page 1 of 2



GILDED BALLOON [Teviot].lw5
MAY 2016

TEVIOT ROW HOUSE
13 BRISTO SQUARE, EDINBURGH, EH89AJ
REV 3 : 2016 FRINGE : MAY 2016

ARTISTIC DIRECTOR: KAREN KOREN
PRODUCTION MANAGER: SIOBHAN BRIGGS
PRODUCTION@GILDEDBALLOON.CO.UK

Position	Unit#	Chan	DMX	Purpose	Inst Type	Watt	Access	Color	Gobo
Night Club									
Night Club FOH Pipe 2	1	(202)	119	Moving LED Wash	VaryLED A7 Zoom	236w		R, G, B	
"	2	(7)	7	House Lights	Strand Coda 500/1	500w		O/W	
"	3	(5)	5	Front Spot	S4-19	575w		"	
"	4	(201)	87	Moving LED Wash	VaryLED A7 Zoom	236w		R, G, B	
Night Club FOH Pipe 1	1	(102)	56	Moving LED Profile	MAC 700 Profile	1.2kw		CYM	
"	2			Sound	D&B Audiotechnik E3	10w		N/A	
"	3	(4)	4	Cool Front Fill	Strand Quartet Fresnel	2kw	Quartet Barn Door	L202	
"	4	(2)	2	Warm Front Fill	"	"	"	L206	
"	5	(3)	3	Cool Front Fill	"	"	"	L202	
"	6			Sound	D&B Audiotechnik E3	10w		N/A	
"	7	(1)	1	Warm Front Fill	Strand Quartet Fresnel	2kw	Quartet Barn Door	L206	
"	8	(101)	25	Moving LED Profile	MAC 700 Profile	1.2kw		CYM	
Night Club DS Truss	2	(7)	7	House Lights	Strand Coda 500/1	500w		O/W	
Night Club SL Column	1			Sound	D&B Audiotechnik Q7	25w		N/A	
Night Club SR Column	"			"	"	"		"	

THE EDINBURGH FESTIVAL FRINGE 2016

GILDED BALLOON VENUE SCHEDULE
Page 2 of 2



GILDED BALLOON [Teviot].lw5
MAY 2016

Position	Unit#	Chan	DMX	Purpose	Inst Type	Watt	Access	Color	Gobo
Night Club									
Night Club SR Column	2			Sound	D&B Audiotechnik E3	10w		N/A	
Night Club US Pipe	1	(6)	6	3/4 Bax Temp Wash	S4-50	575w		O/W	77805
"	2	(204)	183	Moving LED Wash	VaryLED A7 Zoom	236w		R, G, B	
"	3	(203)	151	"	"	"		"	
"	4	(6)	6	3/4 Bax Temp Wash	S4-50	575w		O/W	77805
Night Club Deck Mount	1			Sound	D&B Audiotechnik Q Sub	42w		N/A	

The Night Club

